

# fladet<sup>®</sup> SERIES...

## DATA SHEET

## SWIVEL MOUNTING BASE

PART NO :  
IHMB01-XY

OLD DWG. NO:DP-5.8/08-163

DATE: MAR. 2019

REVISION : 02

SCALE : N.T.S

SHEET: 1 OF 1

APPD. BY : *[Signature]*

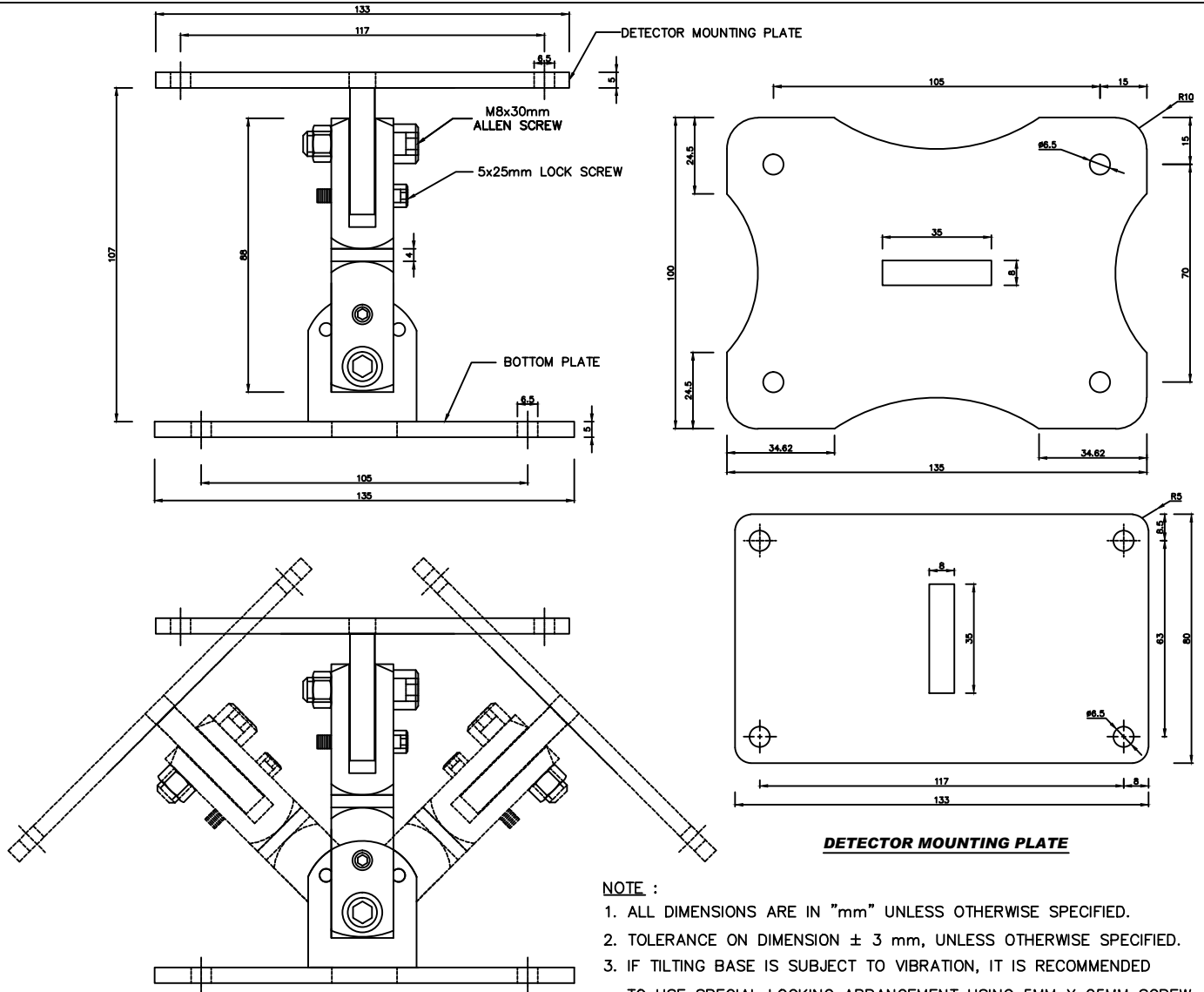
NEW DOC. NO:DP-5.8/MT-043

REV-01-JAN.2014: TILTING ARRANGEMENT CHANGED. REV-02-MAR.2019: REV 02 IS THE SAME AS REV 01 EXCEPT FOR ADDING ISO 9001:2015

### INTRODUCTION :-

MOUNTING BASE CAN BE TILTED UP TO 90° ANGLE IN X AXIS AND Y AXIS. FLADET SERIES DETECTOR IH166, IH167, IH224, IH225, IH225R, IH226 & IH153ES CAN BE MOUNTED ON THIS BASE AND VIEW ANGLE CAN BE ADJUSTED AS PER REQUIREMENT.

**NOTE:** THIS DATASHEET CAN BE ALSO REFERRED AS DOC. NO:DP-5.8/CP-043



**DETECTOR MOUNTING PLATE**

### NOTE :

1. ALL DIMENSIONS ARE IN "mm" UNLESS OTHERWISE SPECIFIED.
2. TOLERANCE ON DIMENSION  $\pm 3$  mm, UNLESS OTHERWISE SPECIFIED.
3. IF TILTING BASE IS SUBJECT TO VIBRATION, IT IS RECOMMENDED TO USE SPECIAL LOCKING ARRANGEMENT USING 5MM X 25MM SCREW PROVIDED WITH THE BASE, HOWEVER BY USING SCREW THE BRACKET CAN BE TILTED AT 3 POSITIONS ONLY  $-45^\circ, 0^\circ, +45^\circ$  ( $\pm 10^\circ$  TOLERANCE)

### TECHNICAL SPECIFICATION

01.	MANUFACTURER	AGNI CONTROLS - CHENNAI	06.	FASTENERS	SS 304
02.	CONSTRUCTION	MS SHEET 5MM THICK			
03.	OVERALL SIZE	135L X 100W X 117H			
04.	FINISHING	POWDER COATING BLACK SHADE			
05.	TILTING ANGLE	IN X AXIS $-45^\circ, 0^\circ, +45^\circ$ IN Y AXIS $-45^\circ, 0^\circ, +45^\circ$			

### IMPORTANT:

AGNI CONTROLS RESERVES THE RIGHT TO CHANGE OR MODIFY WITHOUT PREVIOUS NOTICE ANY DATA OR SPECIFICATION DUE TO CHANGES OR MODIFICATION IN ORDER TO IMPROVE THE PRODUCTS/SYSTEM PRESENTED.

**AGNI CONTROLS**  
CHENNAI  
NO.1, 6TH STREET, Dr.SUBBARAYAN NAGAR,  
KODAMBAKKAM, CHENNAI-600 024, INDIA.  
PHONE : +91 44 2481 2420,  
E-MAIL : [engineering@agnicontrols.com](mailto:engineering@agnicontrols.com) WEBSITE : [www.balafire.com](http://www.balafire.com)

**ISO 9001 - 2015**  
**CERTIFIED BY**  
**BUREAU VERITAS**