

fladet[®] SERIES...

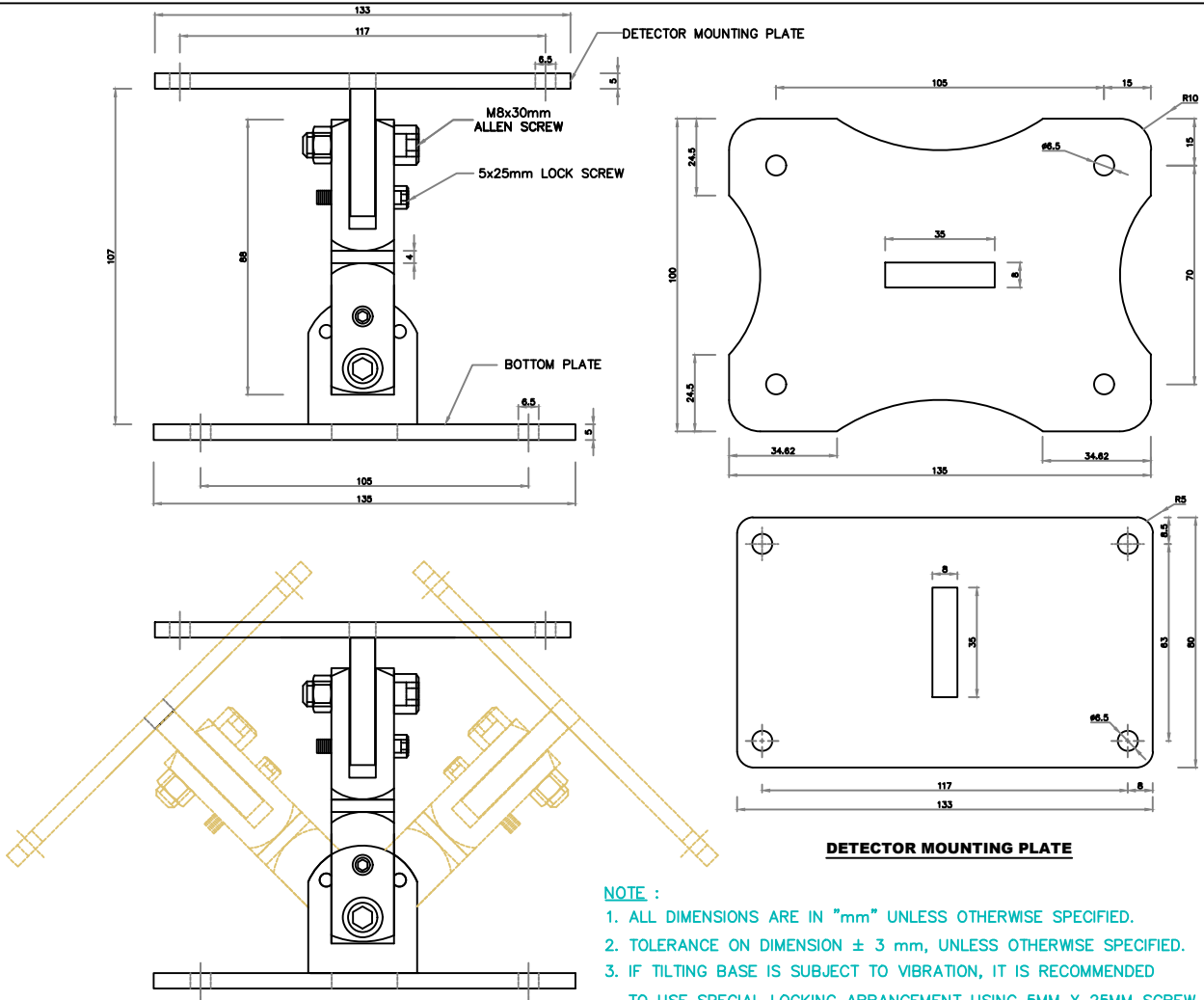
DATA SHEET	SWIVEL MOUNTING BASE	PART NO : IHMB01-XY
OLD DWG. NO:DP-5.8/08-163	DATE:MAR. 2019	REVISION :02
NEW DOC. NO:DP-5.8/MT-043	SCALE : N.T.S	SHEET: 1 OF 1
APPD. BY :DBS		

REV-02-MAR.2019: REV 02 IS THE SAME AS REV 01 EXCEPT FOR ADDING ISO 9001:2015

INTRODUCTION :-

MOUNTING BASE CAN BE TILTED UPTO 90° ANGLE IN X AXIS AND Y AXIS. FLADET SERIES DETECTOR IH166, IH167, IH224, IH225, IH225R, IH226 & IH153ES CAN BE MOUNTED ON THIS BASE AND VIEW ANGLE CAN BE ADJUSTED AS PER REQUIREMENT.

NOTE: THIS DATASHEET CAN BE ALSO REFERRED AS DOC. NO:DP-5.8/CP-043



NOTE :

1. ALL DIMENSIONS ARE IN "mm" UNLESS OTHERWISE SPECIFIED.
2. TOLERANCE ON DIMENSION ± 3 mm, UNLESS OTHERWISE SPECIFIED.
3. IF TILTING BASE IS SUBJECT TO VIBRATION, IT IS RECOMMENDED TO USE SPECIAL LOCKING ARRANGEMENT USING 5MM X 25MM SCREW PROVIDED WITH THE BASE, HOWEVER BY USING SCREW THE BRACKET CAN BE TILTED AT 3 POSITIONS ONLY -45°, 0°, +45° (± 10° TOLERANCE)

TECHNICAL SPECIFICATION

01.	MANUFACTURER	AGNI CONTROLS – CHENNAI	06.	FASTENERS	SS 304
02.	CONSTRUCTION	MS SHEET 5MM THICK			
03.	OVERALL SIZE	135L X 100W X 117H			
04.	FINISHING	POWDER COATING BLACK SHADE			
05.	TILTING ANGLE	IN X AXIS -45°, 0°, + 45° IN Y AXIS -45°, 0°, + 45°			

<p>IMPORTANT:</p> <p>AGNI CONTROLS RESERVES THE RIGHT TO CHANGE OR MODIFY WITHOUT PREVIOUS NOTICE ANY DATA OR SPECIFICATION DUE TO CHANGES OR MODIFICATION IN ORDER TO IMPROVE THE PRODUCTS/SYSTEM PRESENTED.</p>	<p>AGNI CONTROLS CHENNAI</p> <p>NO.1, 6TH STREET, Dr.SUBBARAYAN NAGAR, KODAMBAKKAM, CHENNAI-600 024, INDIA. PHONE : +91 44 2481 2420. E-MAIL : engineering@agnicontrols.com WEBSITE : www.balafire.com</p>	<p>ISO 9001 - 2015 CERTIFIED BY BUREAU VERITAS</p>
--	---	---