

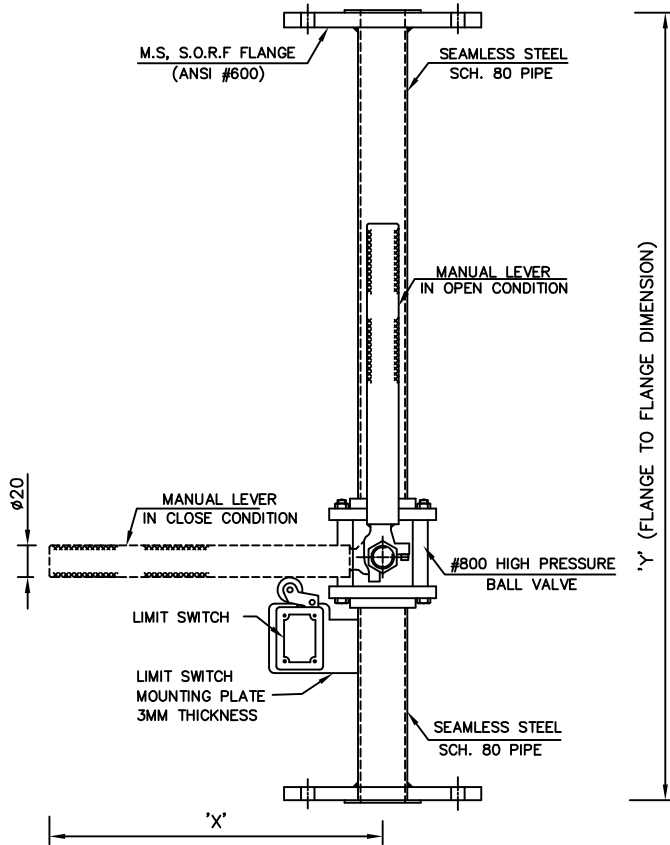
OLD DWG.NO.: DP-5.8/08-049	DATE : JUNE 2019	REVISION : 02	SCALE : N.T.S	SHEET : 1 OF 1	APPD. BY : DBS
NEW DWG.NO.: DP-5.8/MT-009					

**INTRODUCTION :-**

MANUAL LOCK-OUT VALVE IS DESIGNED TO USE IN CO2 DISCHARGE LINE WHERE THE CO2 SYSTEM IS INSTALLED IN NORMALLY OCCUPIED AREA.

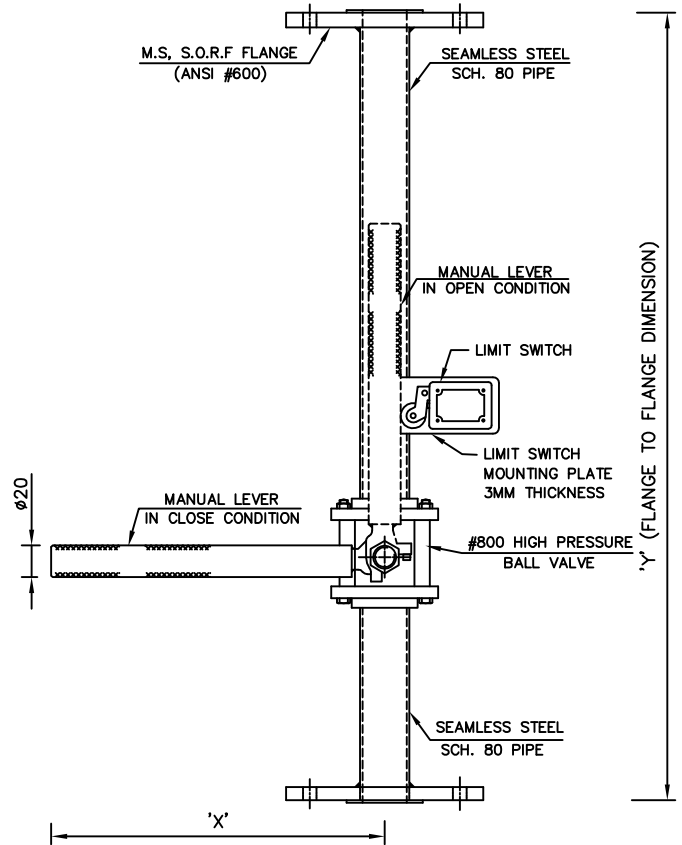
REV-01: CHANGE IN TECHNICAL SPECIFICATIONS

REV-02: REV-02 IS THE SAME AS REV-01 EXCEPT FOR ADDING ISO 9001:2015.



**TYPE - A**

(MANUAL LOCK-OUT VALVE  
TO BE USED IN NORMALLY  
OPEN CONDITION)



**TYPE - B**

(MANUAL LOCK-OUT VALVE  
TO BE USED IN NORMALLY  
CLOSED CONDITION)

SL.NO.	PART NO.	VALVE SIZE	DIMENSION IN 'mm'	
			'X'	'Y'
01.	IH237/15	15 NB	185	470
02.	IH237/25	25 NB	200	470
03.	IH237/32	32 NB	200	470
04.	IH237/40	40 NB	200	520
05.	IH237/50	50 NB	200	520

**NOTE :**

1. ALL DIMENSIONS ARE 'mm' UNLESS OTHERWISE SPECIFIED.
2. TOLERANCE ON DIMENSION ± 3 MM, UNLESS OTHERWISE SPECIFIED.

**TECHNICAL SPECIFICATION**

01.	MAKE	AGNI CONTROLS - CHENNAI	03.	PAINT SHADE	BLACK TEXTURED
02.	CONSTRUCTION	M.S SEAMLESS SCH. 80 PIPE	04.	PAINTING PROCESS	POWDER COATING
	a). BALL VALVE	3 PIECE, RB, #800	05.	LIMIT SWITCH	10A, 500V
	b). FLANGE	M.S. S.O.R.F FLANGE, #600	06.	TEST PRESSURE	TYPE - LSR
	c). LEVER	M.S ROD			75 BAR

**IMPORTANT:**

AGNI CONTROLS RESERVES THE RIGHT TO CHANGE OR MODIFY WITHOUT PREVIOUS NOTICE ANY DATA OR SPECIFICATION DUE TO CHANGES OR MODIFICATION IN ORDER TO IMPROVE THE PRODUCTS / SYSTEM PRESENTED.



**AGNI CONTROLS**  
CHENNAI

NO.1, 6TH STREET, Dr.SUBBARAYAN NAGAR,  
KODAMBAKKAM, CHENNAI-600 024, INDIA.

PHONE : +91 44 2481 2420, FAX : +91 44 2481 2475,  
E-MAIL : engineering@agnicontrols.com WEBSITE : www.balafire.com

ISO 9001 - 2015  
CERTIFIED BY  
BUREAU VERITAS