

fladet[®] SERIES...

DATA SHEET

TRIPLE SENSOR FLAME DETECTOR

PART NO : IH225R

DOC. NO: DP-5.8/MT-031

DATE: JUN 2024

REV : 04

SCALE : N.T.S

SHEET : 1 OF 1

APPD. BY : DB

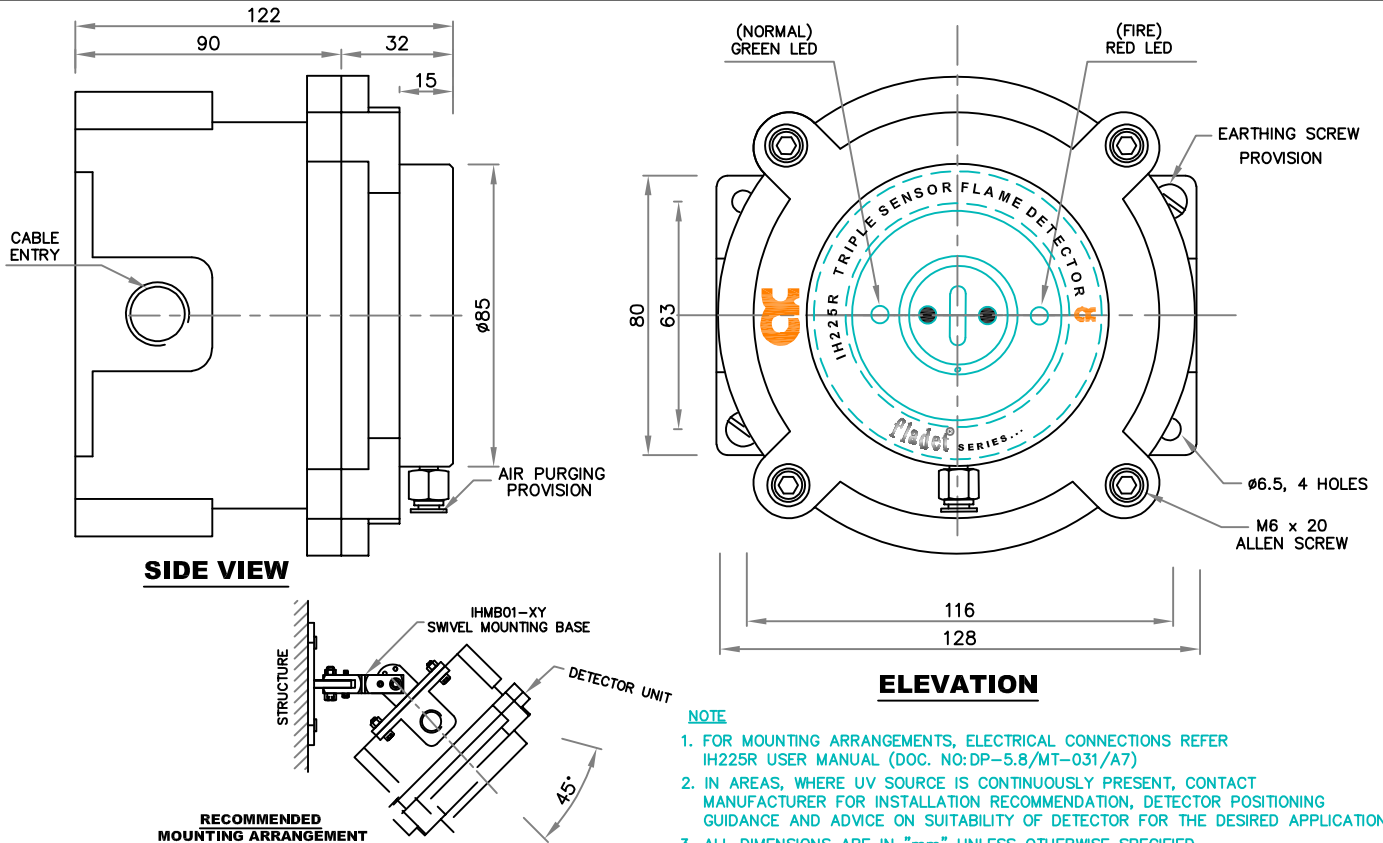
INTRODUCTION :-

TRIPLE SENSOR FLAME DETECTOR WITH IP 66 ENCLOSURE. THE DETECTOR CAN DETECT FLAME. THE DETECTOR HAS PROVISION TO CONNECT DIRECTLY TO ANY STANDARD FIRE ALARM PANEL OR TO CONNECT WITH ANNUNCIATOR OR PLC USING POTENTIAL FREE 'NO' CONTACTS. DETECTOR GIVE FIRE INDICATION AFTER COMPARING THE SENSOR OUTPUT FOR ACTUAL FIRE.

THE DETECTOR IS PROVIDED WITH SENSITIVE SELECTOR SWITCH

NOTE : THIS DATASHEET CAN BE ALSO REFERRED AS DOC. NO: DP-5.8/CP-031

REV_04: ADDITIONAL INFORMATION



NOTE

1. FOR MOUNTING ARRANGEMENTS, ELECTRICAL CONNECTIONS REFER IH225R USER MANUAL (DOC. NO:DP-5.8/MT-031/A7)
2. IN AREAS, WHERE UV SOURCE IS CONTINUOUSLY PRESENT, CONTACT MANUFACTURER FOR INSTALLATION RECOMMENDATION, DETECTOR POSITIONING GUIDANCE AND ADVICE ON SUITABILITY OF DETECTOR FOR THE DESIRED APPLICATION.
3. ALL DIMENSIONS ARE IN "mm" UNLESS OTHERWISE SPECIFIED.
4. TOLERANCE ON DIMENSION ± 3 mm, UNLESS OTHERWISE SPECIFIED.

TECHNICAL SPECIFICATION MODEL NO.APFP-T2060

01.	MANUFACTURER	AGNI CONTROLS – CHENNAI	16	OUTPUT	1. ONE SET OF NO-COM-NC CONTACT FOR FIRE PLUS ONE SET OF DUPLICATE NO-COM-NC CONTACT.
02.	MATERIAL	CAST ALUMINIUM LM6			2. ONE SET OF NO-COM-NC CONTACT FOR FAULT PLUS ONE SET OF DUPLICATE NO-COM-NC CONTACT.
03.	FINISH	ENCLOSURE- HAMMER TONE GRAY II			3. ZONE DETECTOR LINE TO CONNECT DIRECTLY STANDARD CONVENTIONAL FIRE ALARM PANEL.
04.	CABLE ENTRY	M20X1.5 – 3NOS.			
05.	PROTECTION CLASS	IP 66			
06.	SENSING ELEMENT	UV & IR			
07.	RANGE	UV – 185 – 260 nm IR – 3000 – 5000 nm			
08.	FASTENERS	SS 304			
09.	OPERATING TEMPERATURE	-20°C TO +60°C			
10.	SUPPLY	24V DC \pm 20%, (RESETTABLE)	17.	APPROVAL / CONFORMANCE / CERTIFICATION	1. IP PROTECTION CERTIFIED BY ETDC
11.	QUIESCENT CURRENT	< 80 mA			2. CONFORMING REQUIREMENT OF EN 54-10
12.	ALARM CURRENT	< 150 mA			3. CONFORMING REQUIREMENT OF IS-2189.
13.	INDICATION	NORMAL – FLICKERING GREEN LED FIRE – RED LED			4. CONFORMING REQUIREMENT OF FM STANDARDS. CLASS NO.3260
14.	APPLICATION	INDOOR AND SEMI OUTDOOR* * REFER USER MANUAL	18.	SENSITIVITY SELECTION	RANGE OF SELECTIONS
15.	RELAY CONTACT RATING	4.2 LIMITATION NO.2 1A AT 24VDC, 0.5A AT 120VAC			(a) LOW SENSITIVITY – 1
					(b) NORMAL SENSITIVITY – 2 (DEFAULT SETTING)
					(c) HIGH SENSITIVITY – 3
					(d) VERY HIGH SENSITIVITY – 4

IMPORTANT:

AGNI CONTROLS RESERVES THE RIGHT TO CHANGE OR MODIFY WITHOUT PREVIOUS NOTICE ANY DATA OR SPECIFICATION DUE TO CHANGES OR MODIFICATION IN ORDER TO IMPROVE THE PRODUCTS/SYSTEM PRESENTED.

AGNI CONTROLS

NO.1, 6TH STREET, Dr.SUBBARAYAN NAGAR,
KODAMBAKKAM, CHENNAI-600 024, INDIA.

PHONE : +91 44 2481 2420,

E-MAIL : engineering@agnicontrols.com WEBSITE : www.balafire.com

ISO 9001 - 2015
CERTIFIED COMPANY