

fladet[®] SERIES...

DATA SHEET

IR EMBER DETECTOR

PART NO : IH153ES

OLD DWG. NO:DP-5.8/09-210

DATE: MAR.2023

REVISION : 05

SCALE : N.T.S

SHEET: 1 OF 1

APPD. BY : D.B.S

REV-01-JAN.2013: SUB ASSEMBLY NUMBER CHANGED, REV-02-OCT.2014: CE MARKING ADDED.

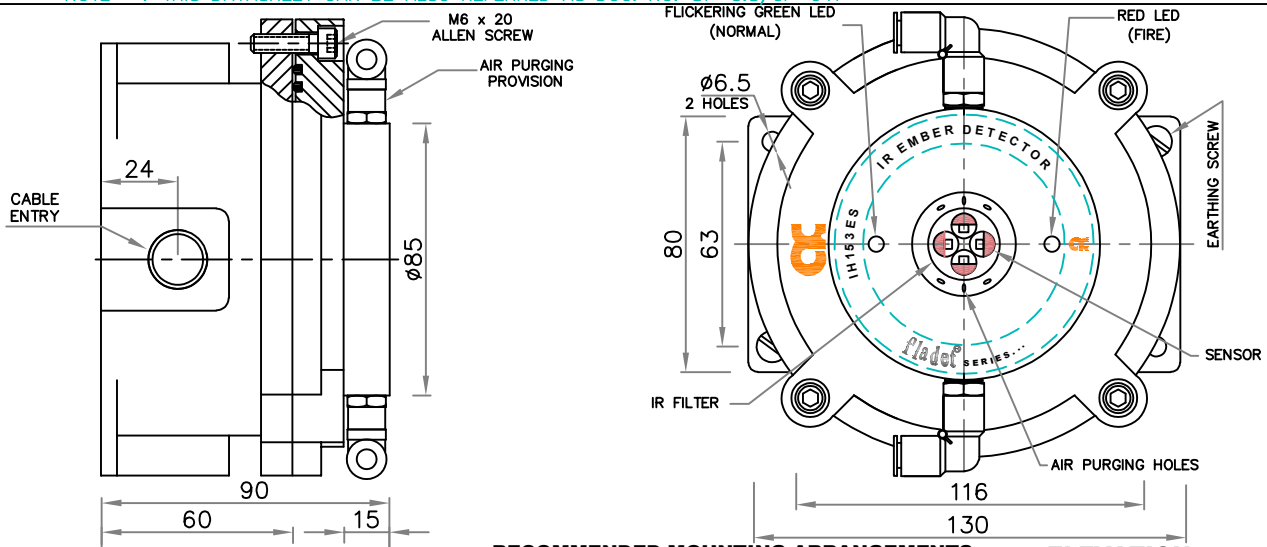
REV-03-JUN.2019: CHANGES IN DIMENSION AND ADDING ISO 9001:2015

REV-04-MAR.2022: CE CERTIFICATE NO. UPDATED. REV-05-MAR.2023: CE CERTIFICATE NO. UPDATED.

INTRODUCTION :-

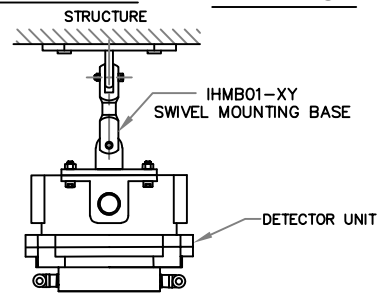
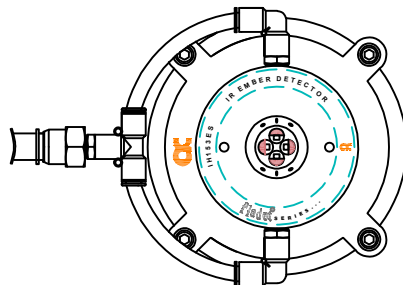
IR EMBER DETECTOR WITH IP 67 ENCLOSURE. THE DETECTOR CAN DETECT EMBER. WIDELY RECOMMENDED TO USE IN COAL CONVEYOR PROTECTION. THE DETECTOR CAN BE CONNECTED TO FIRE ALARM PANEL / ANNUNCIATION PANEL / PLC USING SUITABLE POTENTIAL FREE CONTACTS. THE DETECTOR IS PROVIDED WITH SENSITIVITY SELECTION SWITCH.

NOTE : THIS DATASHEET CAN BE ALSO REFERRED AS DOC. NO: DP-5.8/CP-041



RECOMMENDED MOUNTING ARRANGEMENTS

ELEVATION



NOTE :

1. ALL DIMENSIONS ARE IN "mm" UNLESS OTHERWISE SPECIFIED.
2. TOLERANCE ON DIMENSION ± 3 mm, UNLESS OTHERWISE SPECIFIED.

TECHNICAL SPECIFICATION

<p>01. MANUFACTURER 02. TECHNICAL SUPPORT 03. MODEL NO. 04. MATERIAL 05. FINISH 06. CABLE ENTRY 07. PROTECTION CLASS 08. SENSING ELEMENT 09. SPECTRAL FILTER 10. EXTERNAL EARTHING 11. FASTENERS 12. OPERATING TEMPERATURE 13. SUPPLY 14. QUIESCENT CURRENT 15. ALARM CURRENT 16. DETECTOR SENSITIVITY 17. INDICATION</p>	<p>AGNI CONTROLS – CHENNAI EU MAKE COMPONENTS APFP-T2060 CAST ALUMINIUM LM6 ENCLOSURE- HAMMER TONE GRAY 3/4" ET/ M20X1.5 – 3NOS IP 67 INFRA RED 3000 – 14000 nm 2 Nos.-M6 SS 304 -20°C TO +60°C SUPPLY 24V DC ± 20%, < 40mA < 120mA 100 SQ.CM EMBER @ 1 TO 3 METER IN 90 DEG. CONE ANGLE & STRAIGHT LINE AT NORMAL SENSITIVITY.. NORMAL – FLICKERING GREEN LED FIRE – RED LED</p>	<p>18. OUTPUT 18a. SENSITIVITY SELECTION 19. RELAY CONTACT RATING 20. APPROVAL / CONFORMATION / CERTIFICATION</p>	<p>IH153ES-APFP</p> <ol style="list-style-type: none"> 1. ONE SET OF NO-COM-NC CONTACT FOR FIRE PLUS ONE SET OF DUPLICATE NO-COM-NC CONTACT. 2. ONE SET OF NO-COM-NC CONTACT FOR FAULT PLUS ONE SET OF DUPLICATE NO-COM-NC CONTACT. 3. ZONE DETECTOR LINE TO CONNECT DIRECTLY STANDARD CONVENTIONAL FIRE ALARM PANEL. 4 RANGE OF SELECTIONS VERY HIGH SENSITIVITY – 1 HIGH SENSITIVITY – 2 NORMAL SENSITIVITY – 3 (DEFAULT SETTING) LOW SENSITIVITY – 4 5A AT 30V DC, 1A AT 250V AC 1.CE CERTIFICATE NO.ET/EMC/2022/1335S1 2.IP PROTECTION CERTIFIED BY ETC 3.CONFORMING REQUIREMENT NFPA 72E. & FM3260 4.CONFORMING REQUIREMENT OF IS-2189.
---	---	---	--

IMPORTANT:

AGNI CONTROLS RESERVES THE RIGHT TO CHANGE OR MODIFY WITHOUT PREVIOUS NOTICE ANY DATA OR SPECIFICATION DUE TO CHANGES OR MODIFICATION IN ORDER TO IMPROVE THE PRODUCTS/SYSTEM PRESENTED.

**AGNI CONTROLS
CHENNAI**
NO.1, 6TH STREET, Dr.SUBBARAYAN NAGAR,
KODAMBAKKAM, CHENNAI-600 024, INDIA.
PHONE : +91 44 2481 2420,
E-MAIL : engineering@agnicontrols.com WEBSITE : www.balafire.com

**ISO 9001 - 2015
CERTIFIED COMPANY**