

fladet[®] SERIES...

DATA SHEET

**FIXED TEMPERATURE BI-METAL&AUTO RESET
PROBE TYPE HEAT DETECTOR 50/55/60/65/70°C
SUITABLE FOR DUCT/MACHINERY MOUNTING TYPE**

PART NO : IH148/2*

OLD DWG. NO:DP-5.8/08-164
NEW DOC. NO:DP-5.8/MT-054

DATE:DEC. 2012

REVISION :00

SCALE : N.T.S

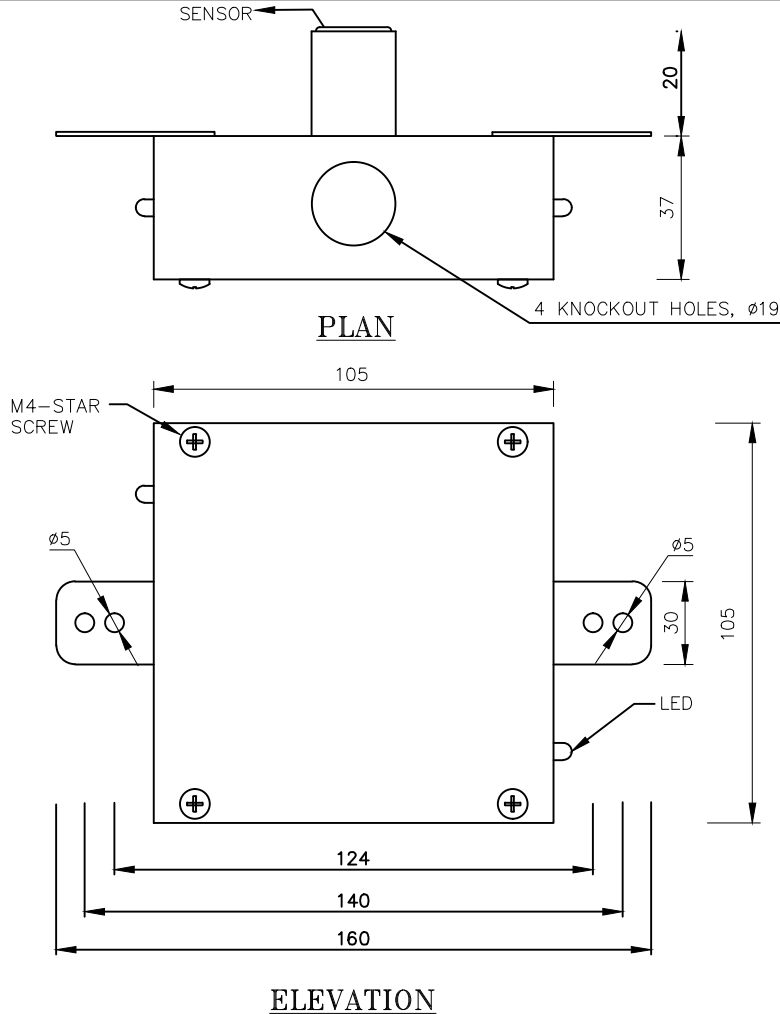
SHEET: 1 OF 1

APPD. BY :

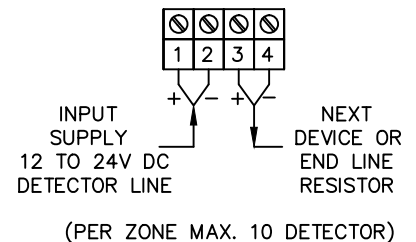
INTRODUCTION :-

FIXED TEMPERATURE BI - METAL & AUTO RESET PROBE TYPE HEAT DETECTOR 50/55/60/65/70°C - TEMPERATURE SETTING WITH DUAL LED INDICATION SUITABLE FOR DUCT MOUNTING AND OTHER SIMILAR APPLICATION.

NOTE:- THIS DATASHEET CAN BE ALSO REFERRED AS DOC. NO:DP-5.8/CP-054



TB DETAILS



NOTE :

1. DETECTOR WORKS WITH ANY STANDARD CONVENTIONAL FIRE ALARM PANEL.
2. RECOMMENDED TO CONNECT UPTO 10 DETECTORS PER ZONE.
3. ALL DIMENSIONS ARE IN "mm" UNLESS OTHERWISE SPECIFIED.
4. TOLERANCE ON DIMENSION ± 3 mm, UNLESS OTHERWISE SPECIFIED.

TECHNICAL SPECIFICATION

01.	WIRING	TWO WIRE	06.	PRINCIPLE OF DETECTOR	BI - METAL PRINCIPLE & AUTO RESET
02.	SUPPLY VOLTAGE	12 TO 24V DC (ZONE LINE)	07.	RESPONSE INDICATION	TWO RED LED
03.	QUIESCENT CURRENT	NIL (WITH OUT END LINE RESISTOR) 2mA-5mA(WITH END LINE RESISTOR)	08.	CABLE ENTRY	($\phi 19$ mm KNOCKOUT HOLES) (ONE AT EACH SIDE)
04.	ALARM CURRENT	45 mA	09.	CONSTRUCTION	20SWG C.R. SHEET
05.	DETECTOR SETTING TEMPERATURE	50/55/60/65/70°C	10.	DIMENSION	105 (L) X 105 (W) X 37 (H)

IMPORTANT:

AGNI CONTROLS RESERVES THE RIGHT TO CHANGE OR MODIFY WITHOUT PREVIOUS NOTICE ANY DATA OR SPECIFICATION DUE TO CHANGES OR MODIFICATION IN ORDER TO IMPROVE THE PRODUCTS / SYSTEM PRESENTED.



NO.1, 6TH STREET, Dr.SUBBARAYAN NAGAR,
KODAMBAKKAM, CHENNAI-600 024, INDIA.
PHONE : +91 44 2481 2420, FAX : +91 44 2481 2475,
E-MAIL : engineering@agnicontrols.com WEBSITE : www.balafire.com

ISO 9001 - 2008
CERTIFIED BY
BUREAU VERITAS