

**DATA SHEET**

## ELECTRICAL TRIP PANEL

PART NO : IH140-ETP

OLD DWG.NO.: DP-5.8/10-238

DATE: JULY 2020

REVISION : 03

SCALE : N.T.S

SHEET : 1 OF 1

APPD. BY :

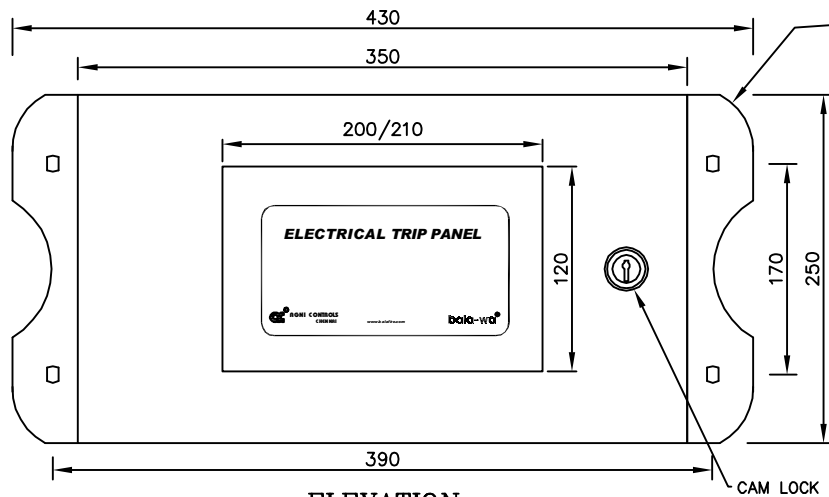
NEW DOC.NO.: DP-5.8/MT-012

**INTRODUCTION :-**

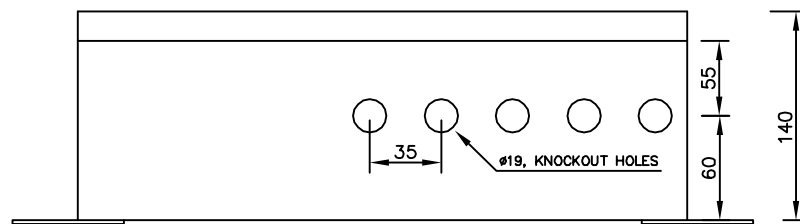
ELECTRICAL TRIP PANEL IS USED WITH FIRE ALARM SYSTEM AND OTHER FIRE SUPPRESSION SYSTEM TO SHUTDOWN THE MACHINERIES. FOR EACH INDIVIDUAL INPUT-1/ INPUT-2/ INPUT-3, 2 SET OF "NO COM NC" CONTACTS ARE AVAILABLE.

REV 03: TERMINAL BLOCK DETAILS UPDATED.

NOTE: THIS DATASHEET CAN BE ALSO REFERRED AS DOC.NO.:DP-5.8/CP-012



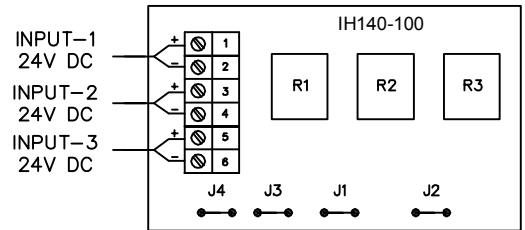
**ELEVATION**



**BOTTOM VIEW**

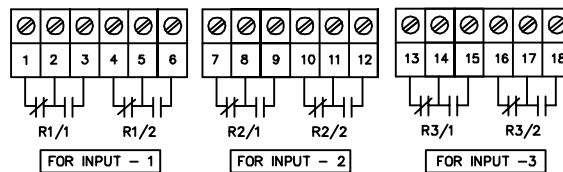
**TERMINAL BLOCK (TB - 1)**

IH140-ETP-P3-PCB ASSEMBLY



**NOTE:**

- IF ONLY ONE INPUT IS USED TO GET 6 SET OF POTENTIAL FREE "NO-COM-NC" CONTACT, USE JUMPER1, JUMPER2, JUMPER3, JUMPER4 TO BE SHORTED.
- USE ANOTHER BOARD TO GET 10 SET OF POTENTIAL FREE 'NO' COM 'NC' CONTACT ANOTHER RELAY SECTION IS SPARE. SAME FOR 8 SET CONTACT.



**TERMINAL BLOCK (TB - 2)**

**CAUTION : (TB - 2)**

- HIGH VOLTAGE MAY BE USED TO TRIP THE EQUIPMENT.
- ISOLATE HIGH VOLTAGE ELSE WHERE.

**NOTE:**

- ALL DIMENSIONS ARE IN "mm" UNLESS OTHERWISE SPECIFIED.
- TOLERANCE ON DIMENSION  $\pm 3$  mm, UNLESS OTHERWISE SPECIFIED

**TECHNICAL SPECIFICATION**

01.	CONSTRUCTION	C.R SHEET ENCLOSURE	07.	CABLE ENTRY	BOTTOM CABLE ENTRY ( $\phi$ 19mm KNOCKOUT HOLES)
02.	INPUT SUPPLY VOLTAGE	24 V DC	08.	OVER ALL DIMENSIONS	350(L) x140(W) x 250(H)
03.	OPERATING VOLTAGE	24 V DC	09.	TERMINAL	CLOSED 15Amps
04.	CURRENT	300 mA Max.	10.	CONTACT RATING	24V DC/250V AC - 12Amps
05.	TYPE OF MOUNTING	WALL MOUNTING TYPE			
06.	PAINT SHADE	'L' GRAY			

**IMPORTANT:**

AGNI CONTROLS RESERVES THE RIGHT TO CHANGE OR MODIFY WITHOUT PREVIOUS NOTICE ANY DATA OR SPECIFICATION DUE TO CHANGES OR MODIFICATION IN ORDER TO IMPROVE THE PRODUCTS / SYSTEM PRESENTED.



NO.1, 6TH STREET, Dr.SUBBARAYAN NAGAR,  
KODAMBAKKAM, CHENNAI-600 024, INDIA.  
PHONE : +91 44 2481 2420  
E-MAIL : engineering@agnicontrols.com WEBSITE : www.balafire.com

**ISO 9001 - 2015  
CERTIFIED  
ORGANIZATION**