

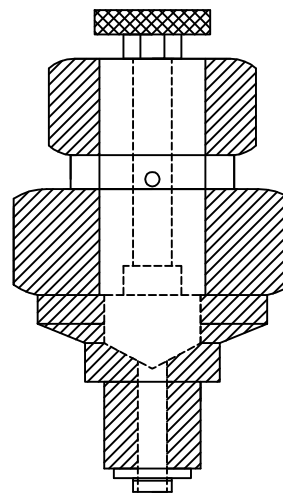
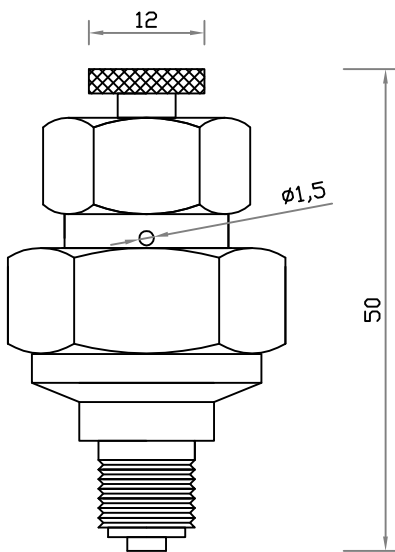
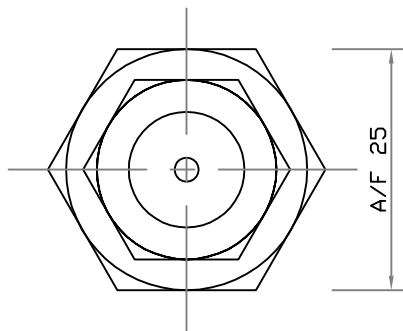
DATA SHEET	BLEEDER VALVE	PART NO : IH138/1
-------------------	----------------------	-------------------

OLD DWG.NO DP-5.8/09-202	DATE: JUN. 2019	REV. :01	SCALE : N.T.S	SHEET : 1 OF 1	APPD. BY : <i>Selva</i>
NEW DWG.NO.:DP-5.8/MT-152					

INTRODUCTION :-

THIS IS USED IN FIXED HIGH PRESSURE CO2 CYLINDER BANK. VERY SMALL GAS LEAKS FROM PILOT/MASTER CYLINDER WILL ESCAPE THROUGH THIS BLEEDER VALVE, THEREBY AVOID DISCHARGE.
 REV-01: REV-01 IS THE SAME AS REV-00 EXCEPT FOR ADDING ISO 9001:2015

TOP VIEW



ELEVATION

NOTE:

- 01. ALL DIMENSIONS ARE IN "mm" UNLESS OTHERWISE SPECIFIED.
- 02. TOLERANCE ON DIMENSION ± 2 mm, UNLESS OTHERWISE SPECIFIED.

TECHNICAL SPECIFICATION

01.	MANUFACTURER	AGNI CONTROLS - CHENNAI	06.	WEIGHT	0.100 Kg (APP.)
02.	VALVE BODY	BRASS			
03.	SEALING NUT	BRASS			
04.	BLEEDING PRESSURE	UP TO 8 BAR			
05.	WASHER	CELLEROD OR FIBER			

IMPORTANT:

AGNI CONTROLS RESERVES THE RIGHT TO CHANGE OR MODIFY WITHOUT PREVIOUS NOTICE ANY DATA OR SPECIFICATION DUE TO CHANGES OR MODIFICATION IN ORDER TO IMPROVE THE PRODUCTS / SYSTEM PRESENTED.



**AGNI CONTROLS
CHENNAI**

NO.1, 6TH STREET, Dr.SUBBARAYAN NAGAR,
KODAMBAKKAM, CHENNAI-600 024, INDIA.
PHONE : +91 44 2481 2420,
E-MAIL : engineering@agnicontrols.com WEBSITE : www.balafire.com

ISO 9001 - 2015
BUREAU VERITAS
CERTIFICATION