

**DATA SHEET**

**CO2 CYLINDER BANK SUITABLE FOR  
4 CYLINDER WITH RAIL ASSEMBLY**

PART NO:  
IH030-4S WD

DP-5.8/MT-164

DATE : JUNE 2019

REVISION : 01

SCALE : N.T.S

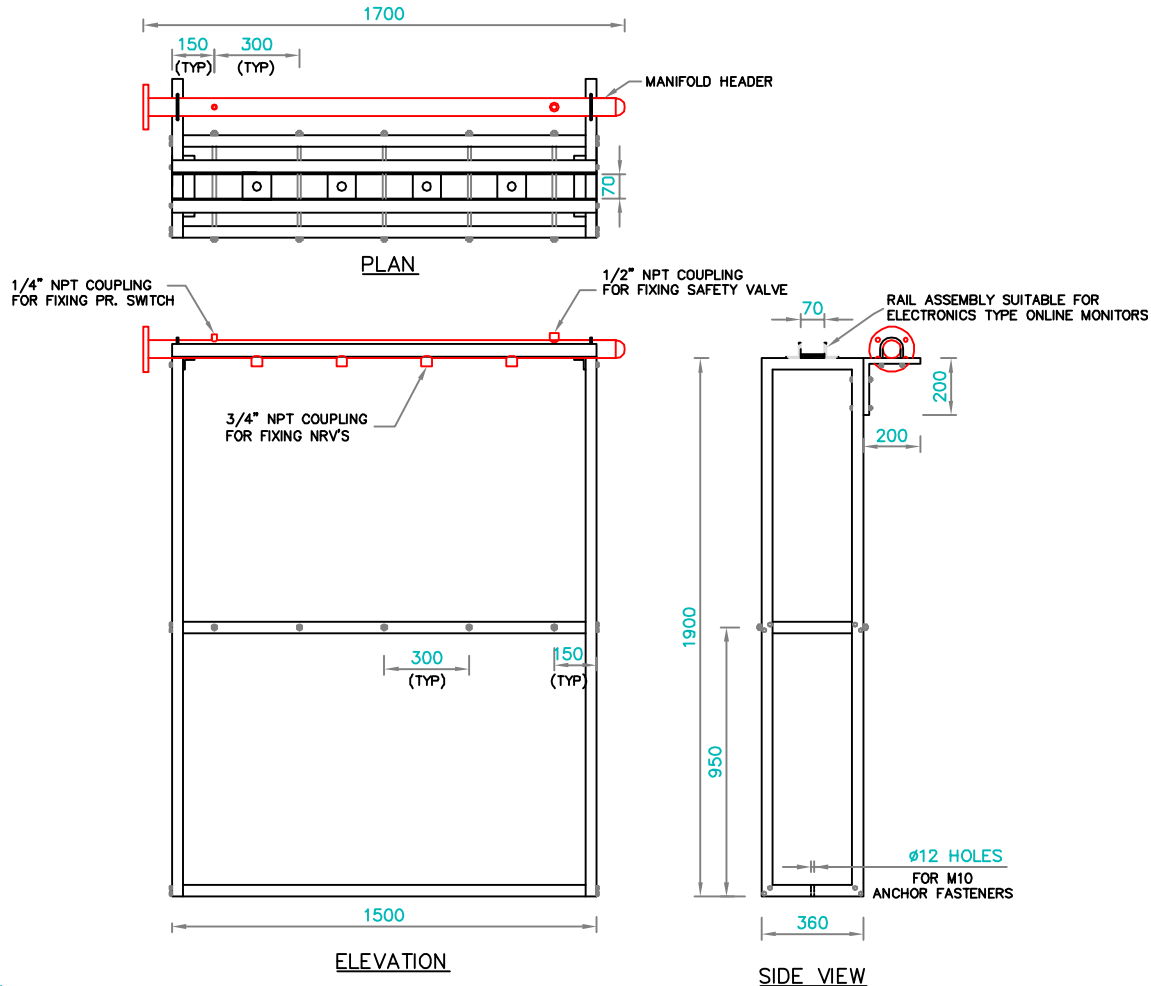
SHEET : 1 OF 1

APPD. BY:DBS

INTRODUCTION :-

TYPICAL CO<sub>2</sub> CYLINDER BANK ARRANGEMENT FOR FIXED INSTALLATION CO<sub>2</sub> FIRE EXTINGUISHER SYSTEM SUITABLE FOR 68 LITRE WATER CAPACITY CYLINDERS OF 267mm DIA MAXIMUM.

REV-01: REV-01 IS THE SAME AS REV-00 EXCEPT FOR ADDING ISO 9001:2015



NOTE:

01. ALL DIMENSIONS ARE IN "mm" UNLESS OTHERWISE SPECIFIED.
02. TOLERANCE ON DIMENSION ± 3 mm, UNLESS OTHERWISE SPECIFIED.

**TECHNICAL SPECIFICATION**

01.	FRAME (a) MATERIAL OF CONSTRUCTION (b) FINISH (c) TYPE OF CONSTRUCTION	MS 40x40x1.6 SQUARE TUBE POWDER COATING - 'L' GRAY TEXTURED FIXED WITH S.S. FASTENERS (REMOVABLE)	03.	RAIL ASSEMBLY (a) MATERIAL OF CONSTRUCTION (b) FINISH (c) TYPE OF CONSTRUCTION	MS 50 x 50 x 6 (L - ANGLE) POWDER COATING - 'L' GRAY TEXTURED FIXED WITH S.S. FASTENERS (REMOVABLE)
02.	HEADER (a) MATERIAL OF CONSTRUCTION (b) FINISH (c) TYPE OF CONSTRUCTION	25NB M.S SEAMLESS SCH 80 ASTM A 106 TESTED AT 100 BAR PRESSURE FOR 10 MINUTES POWDER COATING - RED TEXTURED FIXED WITH S.S. FASTENERS (REMOVABLE)	04.	MOUNTING DETAIL	THROUGH BOTTOM FRAME

IMPORTANT:

AGNI CONTROLS RESERVES THE RIGHT TO CHANGE OR MODIFY WITHOUT PREVIOUS NOTICE ANY DATA OR SPECIFICATION DUE TO CHANGES OR MODIFICATION IN ORDER TO IMPROVE THE PRODUCTS / SYSTEM PRESENTED.