

DATA SHEET

NON RETURN VALVE

PART NO : IH019

OLD DWG.NO DP-5.8/08-031
NEW DWG.NO.:DP-5.8/MT-235

DATE: MAR. 2020

REV : 02

SCALE : N.T.S

SHEET : 1 OF 1

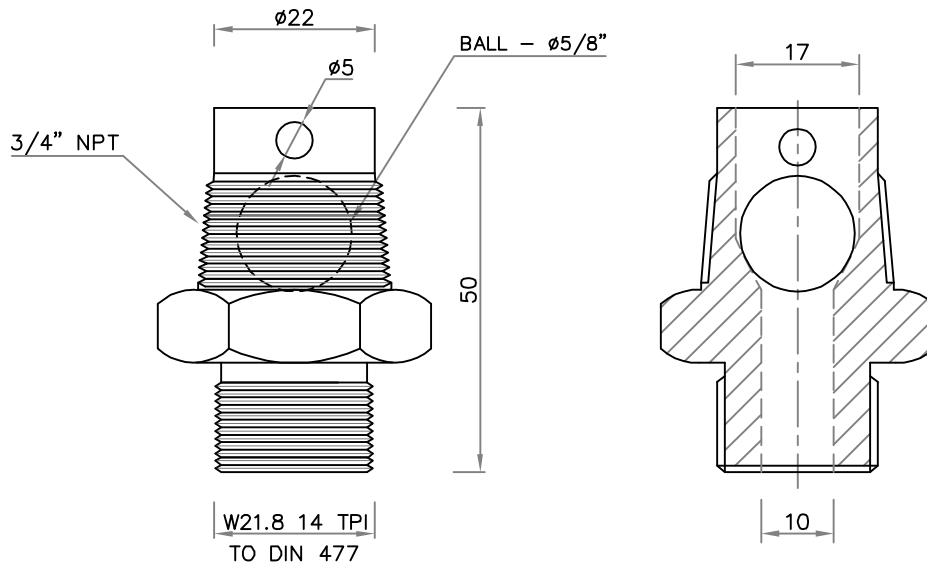
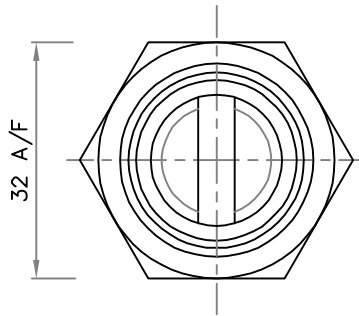
APPD. BY: DBS

INTRODUCTION :-

SLAVE NON RETURN VALVE SUITABLE FOR CONNECTING BETWEEN CYLINDER DISCHARGE HOSE AND HEADER IN CO₂ FIXED FIRE EXTINGUISHING SYSTEM TO PREVENT BACKFLOW OF GAS.

REV-02: UPDATED TECHNICAL SPECIFICATIONS AND PRODUCT NAME.

TOP VIEW



ELEVATION

NOTE:

1. ALL DIMENSIONS ARE IN "mm" UNLESS OTHERWISE SPECIFIED.
2. TOLERANCE ON DIMENSION ± 2 MM, UNLESS OTHERWISE SPECIFIED.

TECHNICAL SPECIFICATION

01.	MANUFACTURER	AGNI CONTROLS – CHENNAI
02.	MATERIAL OF CONSTRUCTION	BRASS
03.	TESTING PRESSURE	90 BAR HYDRAULIC
04.	WORKING PRESSURE	60 BAR
05.	WEIGHT	0.2 Kg (APP.)

IMPORTANT:

AGNI CONTROLS RESERVES THE RIGHT TO CHANGE OR MODIFY WITHOUT PREVIOUS NOTICE ANY DATA OR SPECIFICATION DUE TO CHANGES OR MODIFICATION IN ORDER TO IMPROVE THE PRODUCTS / SYSTEM PRESENTED.



**AGNI CONTROLS
CHENNAI**

**ISO 9001 - 2015
CERTIFIED COMPANY**

NO.1, 6TH STREET, Dr.SUBBARAYAN NAGAR,
KODAMBAKKAM, CHENNAI-600 024, INDIA.

PHONE : +91 44 2481 2420,

E-MAIL : engineering@agnicontrols.com WEBSITE : www.balafire.com