

DATA SHEET

ON LINE MONITOR MECHANICAL INDICATOR TYPE

PART NO : IH006R-SS

MODEL NO : 01-1/
01-3/01-8

NEW DOC.NO.:DP-5.8/MT-467

DATE : JAN. 2017

REV : 00

N.A

SHEET :
1 OF 2

APPD.
BY : 

NEW DOC.NO.:DP-5.8/MT-467

DATE : OCT. 2017

REV : 01

ADDITIONAL INFORMATION IS ADDED

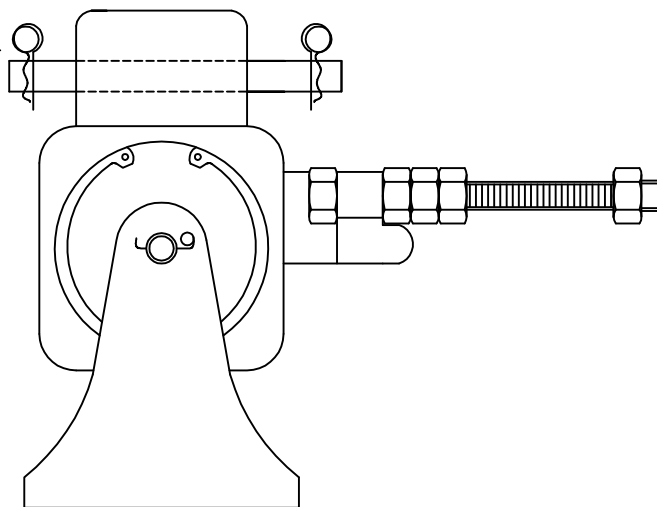
INTRODUCTION :-

ON LINE MONITOR IS USED IN GAS BASED FIRE EXTINGUISHING SYSTEM LIKE CO2 GAS TO PROVIDE ALERT INDICATION TO CHECK REFILL IS REQUIRED TO MEET NFPA / BSI REQUIREMENT. MOVEMENT OF INDICATOR IN DOWNWARD POSITION RECOMMENDS REFILL STATUS. PLEASE NOTE THAT THIS DEVICE IS NOT WEIGHING UNIT. THIS WILL ONLY PROVIDE ALERT INDICATION TO CHECK THE CYLINDER AND DO REFILL AS PER REQUIREMENT.

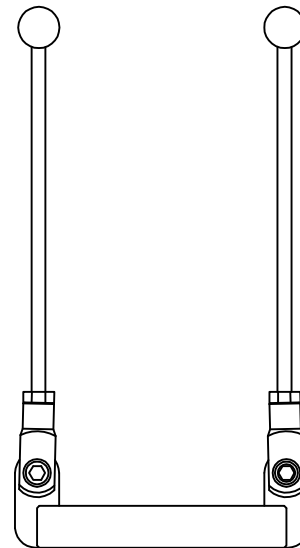
NOTE: * THIS DEVICE IS NOT WEIGHING UNIT. THIS UNIT WILL ONLY PROVIDE ALERT INDICATION TO CHECK THE CYLINDER AND DO REFILL AS PER REQUIREMENT. THIS UNIT ALSO CAN BE REFERRED AS "CONTINUOUS GAS WEIGHT MONITOR MECHANICAL COUNTER WEIGHT TYPE".

* THIS DATASHEET CAN BE ALSO REFERRED AS DP-5.8/CP-467

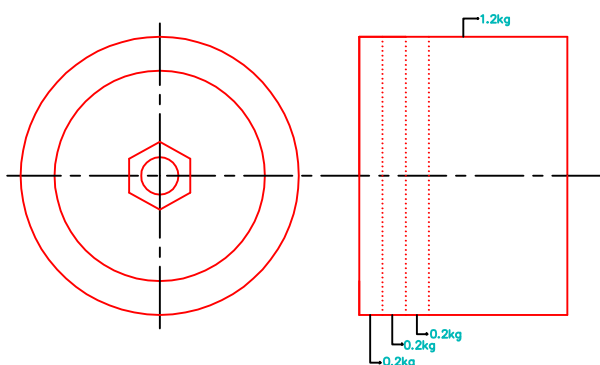
IH006R-SS-P1 (MAIN ON LINE ASSEMBLY-PIN TYPE)



IH006R-SS-P3 (COLLAR ASSEMBLY - Ø80mm)



IH006R-SS-P2 -1.2+3x0.2 (Counter Weight)



SL.NO	GROSS WEIGHT (Cylinder Tare Weight, Valve, Flange and Gas Weight)	RECOMMENDED COUNTER WEIGHT IN KGS.
01.	110 Kg	1.2 + 0.2
02.	115 Kg	1.2 + 0.2 + 0.2
03.	120 Kg	1.2 + 0.2 + 0.2
04.	125 Kg	1.2 + 0.2 + 0.2 + 0.2
05.	130 Kg	1.2 + 0.2 + 0.2 + 0.2

NOTE:

01. NOT TO SCALE.

TECHNICAL SPECIFICATION

01. MAKE	AGNI CONTROLS - CHENNAI	03.	a) ON LINE MONITOR	MATERIAL	FINISHING
02. OPERATION	MOVEMENT OF INDICATOR IN DOWNWARD POSITION SHOWS REFILL STATUS		b) COLLAR & HANGER ROD	SS316	HAMMER TONE GREY
			c) COUNTER WEIGHT	SS316	RED

IMPORTANT:

AGNI CONTROLS RESERVES THE RIGHT TO CHANGE OR MODIFY WITHOUT PREVIOUS NOTICE ANY DATA OR SPECIFICATION DUE TO CHANGES OR MODIFICATION IN ORDER TO IMPROVE THE PRODUCTS / SYSTEM PRESENTED.

 **AGNI CONTROLS
CHENNAI**

NO.1, 6TH STREET, Dr.SUBBARAYAN NAGAR,
KODAMBAKKAM, CHENNAI-600 024, INDIA.

PHONE : +91 44 2481 2420, FAX : +91 44 2481 2475,

E-MAIL : engineering@agnicontrols.com WEBSITE : www.balafire.com

**ISO 9001 - 2008
CERTIFIED BY
BUREAU VERITAS**

DATA SHEET	ON LINE MONITOR MECHANICAL INDICATOR TYPE			PART NO : IH006R-SS	
				MODEL NO : 01-1/ 01-3/01-8	
NEW DOC.NO.:DP-5.8/MT-467	DATE : JAN. 2017	REV : 00	N.A		SHEET : 2 OF 2
NEW DOC.NO.:DP-5.8/MT-467	DATE : OCT. 2017	REV : 01	ADDITIONAL INFORMATION IS ADDED		

FIXING AND COMMISSIONING PROCEDURE:

FIX THE WEIGHING DEVICE IN FRAME ASSEMBLY. IF LIMIT SWITCH IS USED, FIX THE LIMIT SWITCH AT PROPER POSITION. SELECT PROPER COUNTER WEIGHT AND FOLLOW THE COMMISSIONING PROCEDURE.

COMMISSIONING PROCEDURE:

NORMAL / LOW WEIGHT INDICATION:

COUNTER WEIGHT POSITION IS USED FOR NORMAL OR LOW WEIGHT INDICATION.

WHEN COUNTER WEIGHT STANDS IN HORIZONTAL POSITION, IT INDICATES " NORMAL WEIGHT ".

WHEN COUNTER WEIGHT STANDS IN DOWNWARD POSITION, IT INDICATES "LOW WEIGHT".

PLEASE REFER TABLE, WEIGHT OF COUNTER WEIGHT SHOULD BE SELECTED AS PER CYLINDER TARE WEIGHT PLUS GAS WEIGHT.

FURTHER COUNTER WEIGHT CAN BE MOVED FORWARD OR BACKWARD POSITION TO DO SMALL ADJUSTMENT.

FOR NORMAL 45 KG CO2 CYLINDER, IT IS VERY COMMON TO USE 1.6 KG COUNTER WEIGHT(1.2+0.2+0.2).

NOTE:

I. 0.2 KG IS PROVIDED EXTRA AS SPARE. THIS MAY BE USEFUL IF TARE WEIGHT OF CYLINDER IS COMPARATIVELY VERY HIGH DUE TO MANUFACTURER DESIGN THICKNESS.

II. BACKWARD MOVEMENT OF COUNTER WEIGHT ENSURE HORIZONTAL POSITION OF COUNTER WEIGHT. DUE TO FRAME OR LIMITSWITCH POSITION IF BACKWARD MOVEMENT OF COUNTER WEIGHT IS NOT POSSIBLE, LESS COUNTER WEIGHT CAN BE USED (i.e., REMOVE ONE NUMBER OF 0.2 KG COUNTER WEIGHT PLATE).

IMPORTANT:

AGNI CONTROLS RESERVES THE RIGHT TO CHANGE OR MODIFY WITHOUT PREVIOUS NOTICE ANY DATA OR SPECIFICATION DUE TO CHANGES OR MODIFICATION IN ORDER TO IMPROVE THE PRODUCTS / SYSTEM PRESENTED.



**AGNI CONTROLS
CHENNAI**

NO.1, 6TH STREET, Dr.SUBBARAYAN NAGAR,
KODAMBAKKAM, CHENNAI-600 024, INDIA.

PHONE : +91 44 2481 2420, FAX : +91 44 2481 2475,

E-MAIL : engineering@agnicontrols.com WEBSITE : www.balafire.com

**ISO 9001 - 2008
CERTIFIED BY
BUREAU VERITAS**