

# INDUSTRIAL FIRE PROTECTION MANUFACTURER of

**fladet**<sup>®</sup> SERIES...  
THE GLOBAL INDIAN BRAND

**Flame / Ember / Spark / Probe Type Heat Detectors**



*Designed in India*

*Manufactured in India*

**Made to Meet Global Requirement**

*Agni Controls, a pioneer manufacturing company based in Chennai, Southern Part of India.*

*Since its inception in 1985, Agni Controls has developed into a company with strong manufacturing capability.*

*Today, Agni Controls manufacture various types of Special Application Detectors like Flame, Ember, Spark & Heat and all Indigenously Designed, Manufactured, Assembled & Tested by Agni Controls under brand name **fladet**<sup>®</sup> SERIES...*

*All the extinguishing system & their components are Designed, Manufactured, Assembled & Tested under brand name **bala-wa**<sup>®</sup> SERIES...*

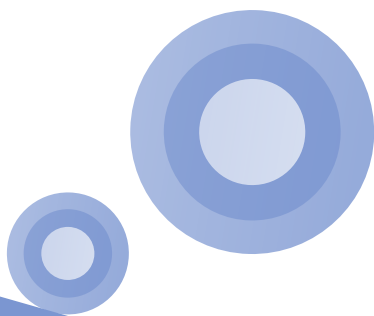
*A dedicated R&D team work on up-gradation of existing products and introducing new product/technology.*

*A dedicated Quality team work on improving the quality standard & service to customers.*

*Both being a core strength, Extinguishing & Detection System enables Agni controls to be a strong OEM supplier to many machinery manufacturer, EPC and other fire protection System Integrators in India and Abroad.*

*To all system integrators, Agni controls provide design and commissioning support to reduce their work load on complex projects.*

*Customer or Third Party Inspection / FAT are also facilitated and co-ordinated by Agni controls team on behalf of the System Integrators. The system integrator can place a single component order or an entire extinguishing system depending on the complexity or requirement of the project.*



**fladet**<sup>®</sup> SERIES...  
THE GLOBAL INDIAN BRAND

## fladet series... IH226 UV IR Flame Detector

Suitable for Non Ex. / Non Flame Proof Area Application

**fladet**®  
SERIES...  
THE GLOBAL INDIAN BRAND

IH226 UV IR FLAME DETECTOR



### FEATURES

- ◆ Manufactured & Tested with stringent quality control as per EN54-10
- ◆ Quick response to flaming fire
- ◆ Extremely immune to false sources
- ◆ Visual status monitored through LED indications
- ◆ Easy to connect with any Conventional & Addressable fire panels, PLC panels.

### APPLICATION

- ◆ Fire pump house / Diesel generator room
- ◆ Storage area / Material conveyors
- ◆ Atriums / High roof areas / Ware-Houses
- ◆ Paint storage areas / Fuel Storage areas
- ◆ Outdoor or Semi Outdoor areas
- ◆ Escalator areas
- ◆ High fire risk machinery areas or installations, often coupled with an Automatic Gas Extinguishing system
- ◆ Underground Cellars
- ◆ Car Parking / Utility area



**fladet series.. IH 8228 FLAME PROOF  
TRIPLE SENSOR UV-IR FLAME DETECTOR**

Suitable for Ex/Flame Proof Area Application

**fladet**®  
SERIES...  
THE GLOBAL INDIAN BRAND

**FEATURES**

- ◆ EN54-10 Approved. Class 1 Detector.
- ◆ Rugged Explosion-Proof enclosure for Hazardous Environment. FM / ATEX / PESO Approved Enclosure.
- ◆ Easy to install and operate
- ◆ High speed response
- ◆ Free from False Alarms
- ◆ Visual Indication for Normal & Fire condition
- ◆ Low Maintenance.
- ◆ Low Standby Current
- ◆ Detectors does not require any special type Control Panel.
- ◆ Swivel Mounting Base is provided for easy mounting at site.

**APPLICATION**

- ◆ Aircraft Hanger
- ◆ Warehouse
- ◆ Petrochemical production area
- ◆ Petrochemical storage and transfer area
- ◆ Natural gas installation
- ◆ Paint shop or Solvent area.
- ◆ Gas compressors
- ◆ Outdoor or Semi outdoor

IH8228 FLAME PROOF TRIPLE SENSOR FLAME DETECTOR



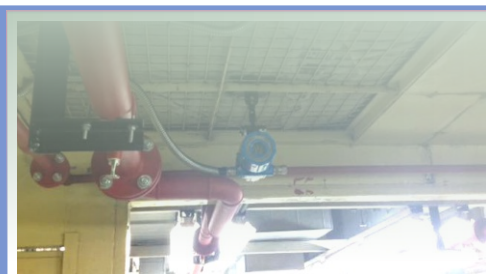
APPROVED



MARKED



ENCLOSURE



## fladet series... Triple IR Flame Detectors

Suitable for Non-Flame / Flame Proof Area Applications

**fladet**®  
SERIES...  
THE GLOBAL INDIAN BRAND

IH1555 Triple IR Flame Detector



IH8555 Triple IR Flame Detector



### FEATURES

- ◆ Quick response to flaming fires
- ◆ Extremely immune to false sources
- ◆ Visual status monitored through LED indications
- ◆ Easy to connect with any Conventional & Addressable fire panels, PLC panels.

### APPLICATION

In process or Storage area, we have different type of Environment and Activities. Places where we need to protect may expose to direct or indirect sun, hot body movement, furnace activities, welding and grinding activities, heat waves, electromagnetic interference, climatic changes like hot summer to deep winter, dry weather to high humidity, fog and snow etc.,

With above multiple interference we need to detect only Actual Fire, not False Fire.

Specially designed high false alarm immune Triple IR Flame Detector meet these challenging requirements.

PESO APPROVED FM APPROVED Ex APPROVED  
**ENCLOSURE**



## fladet series.. IR EMBER DETECTORS

Suitable for Coal Conveyor Application

**fladet**®  
SERIES...  
THE GLOBAL INDIAN BRAND

IH153ES IR EMBER DETECTOR



### FEATURES

- ◆ Rugged model suitable is to be used in challenging environment with weather and dust proof protection.
- ◆ High Sensitivity even in mist & Fog
- ◆ 4 Range of Sensitivity Selection Provision
- ◆ Easy to Install and operate
- ◆ High speed Response
- ◆ Free from False Alarms
- ◆ Visual Indication for Alarm/Normal condition
- ◆ Low Maintenance Cost
- ◆ Stand Alone Air Purging or In-built Air Purging option

### APPLICATION

- ◆ Highly Recommended to use in coal conveyors to detect Smouldering coal or Ember.
- ◆ Material conveyors where fire initially starts with the ember.
- ◆ Environment that are unsuitable for other type of detectors to detect moving ember or ember with flame.

IH153ES-P-IB IR EMBER DETECTOR  
WITH INBUILT AIR PURGING UNIT



# fladet series.. FLAME PROOF IR EMBER DETECTOR

Suitable for Coal Conveyor Application

**fladet**®  
SERIES...  
THE GLOBAL INDIAN BRAND

## FEATURES

- ◆ Rugged Explosion-Proof enclosure for Hazardous Environment. FM / ATEX / PESO Approved Enclosure.
- ◆ High Sensitivity even in mist & Fog
- ◆ 4 Range of Sensitivity Selection Provision
- ◆ Easy to Install and operate
- ◆ High speed Response
- ◆ Free from False Alarms
- ◆ Visual Indication for Alarm/Normal condition
- ◆ Low Maintenance Cost
- ◆ Inbuilt Air Purging provision

## APPLICATION

- ◆ Highly Recommended to use in coal conveyors and Coal Bunkers to detect Smouldering coal or Ember.
- ◆ Material conveyors where fire initially starts with the ember.
- ◆ Environment that are unsuitable for other type of detectors to detect moving ember or ember with flame.

IH8153ES FLAME PROOF IR EMBER DETECTOR



PESO APPROVED **FM** APPROVED **Ex** APPROVED  
**ENCLOSURE**



## fladet series... Flame Detector with Visual Signal

Suitable for Non Ex.Proof / Ex.Proof Area Application

**fladet**®  
SERIES...  
THE GLOBAL INDIAN BRAND

**IH225R-VID FLAME DETECTOR  
WITH VISUAL SIGNAL**



**IH8227-VID FLAME PROOF FLAME DETECTOR  
WITH VISUAL SIGNAL**



### FEATURES

- ◆ Quick response to flaming fires
- ◆ Easy to install, operate & maintain - No special training & skill is required.
- ◆ 4 Range of sensitivity selection.
- ◆ Rugged model suitable to use in Outdoor, non - hazardous and hazardous areas.
- ◆ No false or nuisance alarms.
- ◆ Visual indication for alarm/normal condition.
- ◆ Readily used in environment, where other types of detectors are unsuitable.
- ◆ Suitable to connect with any standard conventional fire alarm system / addressable fire alarm system.
- ◆ 4MP Analogue Video Output suitable to connect to relevant recording device.

### APPLICATION

- ◆ Remote location areas which is not accessed frequently.
- ◆ Machinery production line.
- ◆ Petrochemical storage and transfer area
- ◆ Atriums.
- ◆ High roof areas / Ware -houses.
- ◆ Fire Pump House.
- ◆ Aircraft Hanger
- ◆ Fuel storage areas
- ◆ Outdoor or Semi outdoor areas
- ◆ Underground cellars





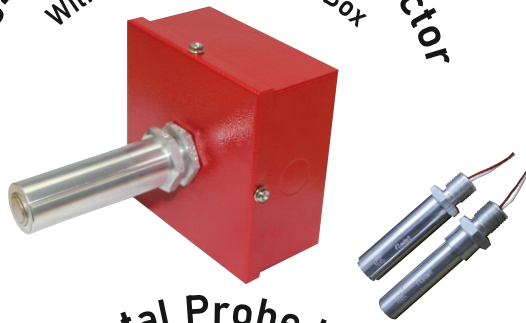
## fladet series.. IH042 SERIES.. PROBE TYPE HEAT DETECTORS

fladet IH 042 series.. Probe type heat detector is fixed temperature type suitable for Hazardous/ Non-Hazardous area application. The detector is an auto resettable type bimetallic sensor. It can be widely used in Fire Detection Alarm system along with other detectors. The detector is completely sealed with one set of lead wire. Detector is available as NO type. NO type detector is normally open condition. When temperature reaches set point contact close.

**IH042E-AX Probe type heat detector**  
With Ex.Proof junction Box



**IH042 Probe type heat detector**  
With M.S / S.S junction Box



**IH042DSS Horizontal Probe type heat detector**  
With M.S / S.S junction Box



### FEATURES

- ◆ Fixed Temperature type. Temperature ranging from (50 Deg.C to 230 Deg.C)
- ◆ Auto Resettable type Bi-Metallic Sensor.
- ◆ Easy to install and operate
- ◆ Readily used along with other type of detectors for early fire warning
- ◆ Easy to install and operate
- ◆ Suitable for All type of Applications - Outdoor / Hazardous / Non-Hazardous
- ◆ Probe available in Aluminium and SS Materials.
- ◆ Optional : Customized Probe Threading.  
(Currently Available as 3/4" ET Thread & M25x1.5 Thread.  
Other Thread standards available on request.)

### APPLICATION

- ◆ Storage tank
- ◆ Generator & Turbine enclosure
- ◆ Paint booth, Kitchen wood ducts
- ◆ Machineries, Battery Room
- ◆ Diesel engine room
- ◆ Furnace area, Engine test bed
- ◆ Dust collectors, Lube oil pits



## Other Range of Special Application Detectors



**Part number :** IH163/6

**Brand :** fladet series..

**Part Description :** 4 IR Spark Detector Module

**Technical Details :** 4 IR Spark Detector module suitable for mounting directly on Duct / Machinery to connect with fire alarm panel / Annunciation panel / PLC using suitable Potential Free Contacts.

**Applications:** Pneumatic ducts, Blow Room machinery ducts, Carding and Filter machineries duct, Paper and Wood industries dust ducts.

**Part number :** IH148

**Brand :** fladet series..

**Part Description :** Fixed Temperature Bi-Metal & Auto Reset type Heat Detector - Wall mounting type.

**Technical Details :** Fixed Temperature Bi-Metal & Auto Reset type Heat Detector - 60 Deg.C Temperature setting suitable for wall or surface mounting type.

**Applications:** Machinery / Production area / Duct Application.



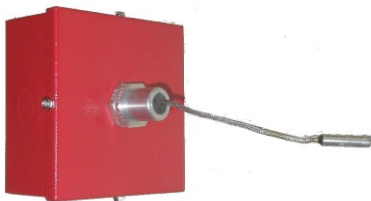
**Part number :** IH042 VTC (0-400)°C

**Brand :** fladet series..

**Part Description :** Variable Temperature Probe Type Heat Detector

**Technical Details :** High temperature probe type heat detector is suitable to use in special application where normal temperature ranges from 0 - 400 Deg. C. 4 Wire system, suitable to connect with any standard conventional Fire alarm panel / Addressable fire alarm panel / annunciation panel / PLC.

**Applications:** Diesel Engine Room, Acoustic Enclosure, Engine Test Bed.



## fladet<sup>®</sup> G GAS DETECTORS

### Gas Detector Ranges:

- > IH 765 Series.. **ELECTRO CHEMICAL TYPE** GAS DETECTORS (Non-Explosion proof)
- > IH 838 Series.. **ELECTRO CHEMICAL TYPE** GAS DETECTORS (Explosion proof)
- > IH 766 Series.. **INFRA RED TYPE** GAS DETECTORS (Non-Explosion proof)
- > IH 815 Series.. **INFRA RED TYPE** GAS DETECTORS (Explosion proof)
- > IH 767 Series.. **PELISTOR TYPE** GAS DETECTORS (Non-Explosion proof)
- > IH 816 Series.. **PELISTOR TYPE** GAS DETECTORS (Explosion proof)
- > IH 777 Series.. **GAS DETECTOR CONTROL PANEL** TO CONNECT UPTO 4 GAS DETECTORS
- > IH 785 Series.. **GAS DETECTOR CONTROL PANEL** TO CONNECT UPTO 16 GAS DETECTORS

### Applications:

- Battery Room
- Car Parking Areas
- Basement Areas
- Cable Trenches
- Cylinder Storage Areas
- Engine Test Beds
- Chemical Storage Room
- Generators
- Gas Turbines
- Chemical Transfer Areas
- Gas Pipelines



## Other Range of Systems & Products



**bala-wa**® SERIES...

Fixed High Pressure CO<sub>2</sub> Fire Suppression System



**bala-wa**® - 100 / 541 / 55 SERIES...

IG 541 / IG 55 / IG 100 Inert Gas Fire Suppression System



**Defao**® SERIES...

Specially designed clean agent systems to extinguish fire at origin



**bala-wa**® - 5112 SERIES...

Clean Agent  
Fire Suppression System



**bala-wa-mist**® SERIES...

Engineered Standalone Water mist system  
Fire Suppression System



Administrative Office

**M/S. AGNI CONTROLS**

No.1, 6th Street, Dr. Subbarayan Nagar,  
Kodambakkam, Chennai - 600024.



+91-44-2481 2420



+91 7448914999



marketing@agnicontrols.com / tendering@agnicontrols.com



www.balafire.com / www.agnicontrols.com

Works

**M/S. AGNI CONTROLS**

No. 2/235, Kundrathur Main Road,  
Gerugambakkam, Porur, Chennai - 602101