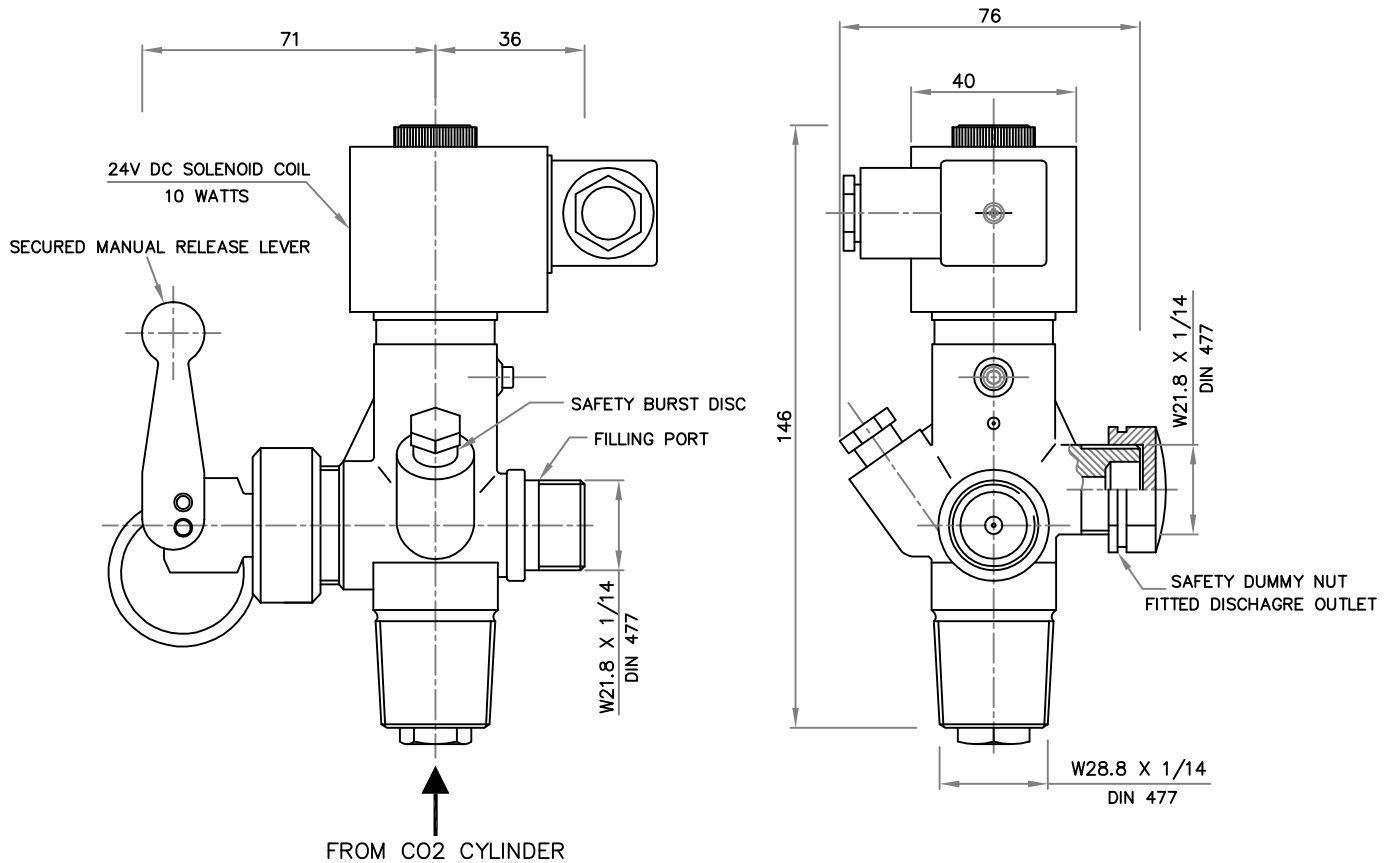


<b>DATA SHEET</b>	<b>CO2 MASTER VALVE WITH 24V DC SOLENOID &amp; MANUAL RELEASE LEVER</b>	OLD PART NO:BOO1/4 PART NO: BIH001/DIN
-------------------	---	---

OLD DWG. NO:DP-5.8/08-004	DATE : MAR. 2019	REV: 01	SCALE : N.T.S	SHEET : 1 OF 1	APPD. BY : <i>Selva</i>
NEW DWG. NO:DP-5.8/MT-107					

**INTRODUCTION :-**

MASTER CYLINDER VALVE FITTED IN THE CO2 CYLINDER CAN BE OPERATED THROUGH ELECTROMAGNETIC. ALSO VALVE CAN BE OPERATED BY USING MANUAL LEVER.  
REV-01: REV-01 IS THE SAME AS REV-00 EXCEPT FOR ADDING ISO 9001:2015.



**NOTE:**

1. ALL DIMENSIONS ARE IN "mm" UNLESS OTHERWISE SPECIFIED.
2. TOLERANCE ON DIMENSION ± 2 MM, UNLESS OTHERWISE SPECIFIED.

**TECHNICAL SPECIFICATION**

01.	MANUFACTURER	CEODEUX (EU)	07.	CO2 DISCHARGE RATE	45 KG/MIN.
02.	MAX. WORKING PRESSURE	250 BAR	08.	DIP TUBE CONNECTION	M10 X 0.75
03.	FUNCTIONAL PRESSURE	60 BAR	09.	OPERATING VOLTAGE	24V DC
04.	WORKING TEMPERATURE	-20°C TO 60°C	10.	POWER CONSUMPTION	10WATTS
05.	SAFETY DISC	220 BAR ± 5%	11.	WEIGHT	1.5KG.
06.	MATERIAL OF COMPONENT	BRASS & SS	12.	APPROVAL	CE

**IMPORTANT:**

AGNI CONTROLS RESERVES THE RIGHT TO CHANGE OR MODIFY WITHOUT PREVIOUS NOTICE ANY DATA OR SPECIFICATION DUE TO CHANGES OR MODIFICATION IN ORDER TO IMPROVE THE PRODUCTS / SYSTEM PRESENTED.



NO.1, 6TH STREET, Dr.SUBBARAYAN NAGAR,  
KODAMBAKKAM, CHENNAI-600 024, INDIA.

PHONE : +91 44 2481 2420,

E-MAIL : engineering@agnicontrols.com WEBSITE : www.balafire.com

ISO 9001 - 2015  
BUREAU VERITAS  
CERTIFICATION