

**DATA SHEET**

**BLEEDER VALVE**

PART NO : IH138/1

OLD DWG.NO DP-5.8/09-202

DATE: APR. 2022

REV. :02

SCALE : N.T.S

SHEET : 1 OF 1

APPD. BY :DBS

NEW DWG.NO.:DP-5.8/MT-152

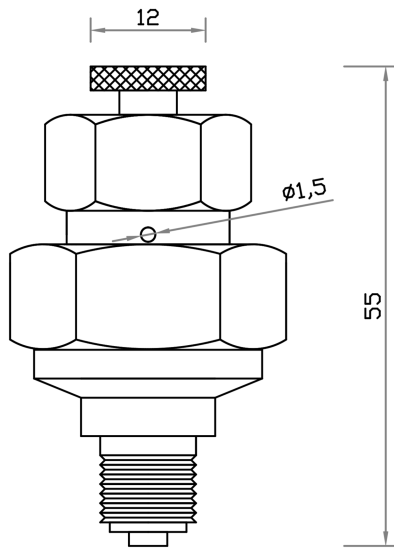
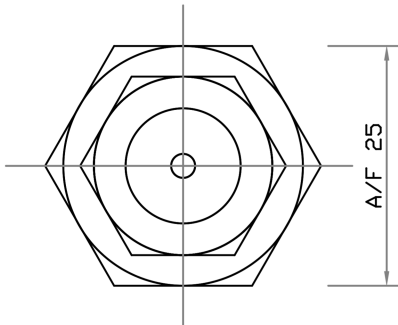
INTRODUCTION :-

THIS IS USED IN FIXED HIGH PRESSURE CO2 CYLINDER BANK. VERY SMALL GAS LEAKS FROM PILOT/MASTER CYLINDER WILL ESCAPE THROUGH THIS BLEEDER VALVE, THEREBY AVOID DISCHARGE.

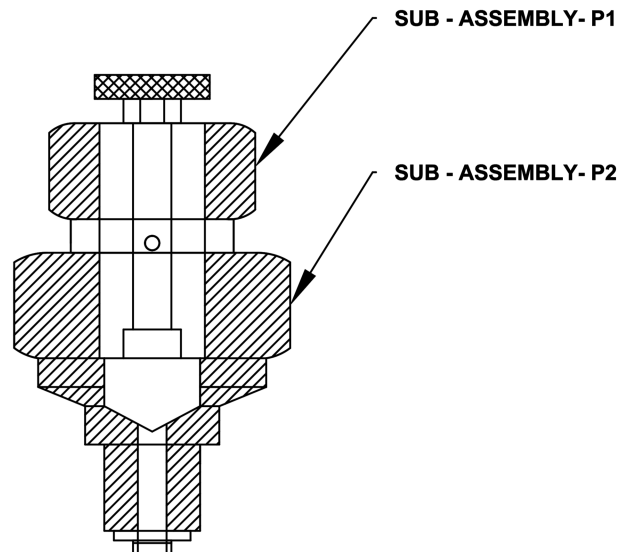
REV-01: REV-01 IS THE SAME AS REV-00 EXCEPT FOR ADDING ISO 9001:2015

REV-02: TECHNICAL SPECIFICATION IS UPDATED

**TOP VIEW**



**ELEVATION**



NOTE:

- 01. ALL DIMENSIONS ARE IN "mm" UNLESS OTHERWISE SPECIFIED.
- 02. TOLERANCE ON DIMENSION ± 5 mm, UNLESS OTHERWISE SPECIFIED.

**TECHNICAL SPECIFICATION**

01. MANUFACTURER	AGNI CONTROLS – CHENNAI	05. WEIGHT	0.100 Kg (APP.)
02. VALVE BODY	BRASS		
03. SEALING NUT	BRASS		
04. BLEEDING PRESSURE	UP TO 8 BAR		

IMPORTANT:

AGNI CONTROLS RESERVES THE RIGHT TO CHANGE OR MODIFY WITHOUT PREVIOUS NOTICE ANY DATA OR SPECIFICATION DUE TO CHANGES OR MODIFICATION IN ORDER TO IMPROVE THE PRODUCTS / SYSTEM PRESENTED.


**ISO 9001 - 2015  
CERTIFIED COMPANY**

NO.1, 6TH STREET, Dr.SUBBARAYAN NAGAR,  
 KODAMBAKKAM, CHENNAI-600 024, INDIA.  
 PHONE : +91 44 2481 2420,  
 E-MAIL : engineering@agnicontrols.com WEBSITE : www.balafire.com