

DATA SHEET

CO2 CYLINDER BANK SUITABLE FOR 8 CYLINDER WITH RAIL ASSEMBLY

PART NO:
IH030-8S WD

OLD REF NO : 219
DP-5.8/08-024

DATE : JAN 2012

REVISION : 01

SCALE : N.T.S

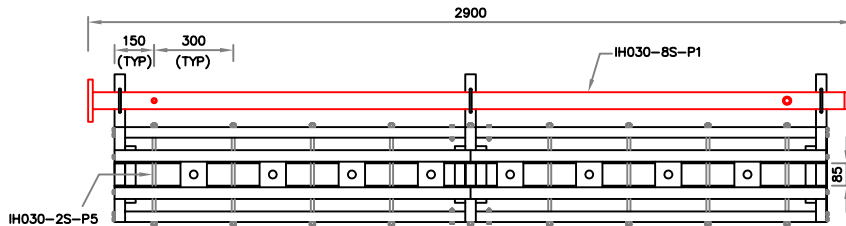
SHEET : 1 OF 1

APPD. BY: DB

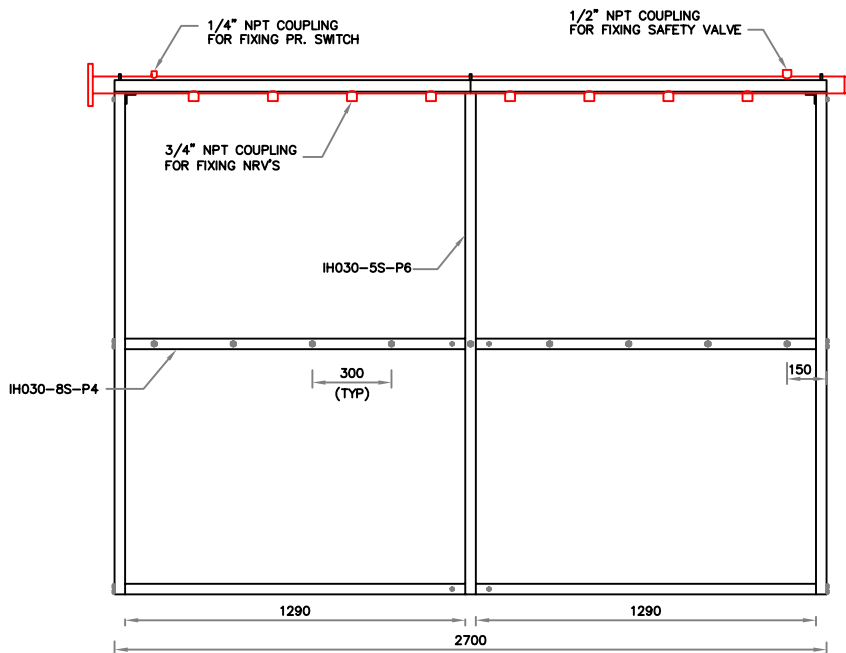
INTRODUCTION :-

TYPICAL CO₂ CYLINDER BANK ARRANGEMENT FOR FIXED INSTALLATION CO₂ FIRE EXTINGUISHER SYSTEM SUITABLE FOR 60 LITRE /68 LITRE WATER CAPACITY CYLINDERS OF 267mm DIA MAXIMUM.

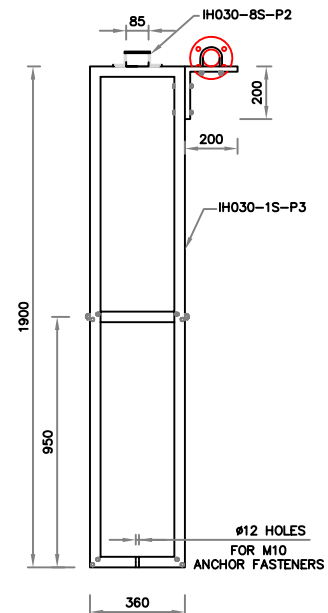
REV 01:- REV 01 IS SAME AS REV 00 EXCEPT CHANGE IN THE RAIL ASSEMBLY AND ADDING CODE NUMBER.



PLAN



ELEVATION



SIDE VIEW

NOTE:

- 01. ALL DIMENSIONS ARE IN "mm" UNLESS OTHERWISE SPECIFIED.
- 02. TOLERANCE ON DIMENSION ± 3 mm, UNLESS OTHERWISE SPECIFIED.

TECHNICAL SPECIFICATION

01.	FRAME		03.	RAIL ASSEMBLY	
	(a) MATERIAL OF CONSTRUCTION	MS 40x40x1.6 SQUARE TUBE		(a) MATERIAL OF CONSTRUCTION	MS 50 x 50 x 6 (L - ANGLE)
	(b) FINISH	POWDER COATING - SEIMENS GRAY TEXTURED		(b) FINISH	POWDER COATING - SIEMENS GRAY TEXTURED
	(c) TYPE OF CONSTRUCTION	FIXED WITH S.S. FASTENERS REMOVABLE		(c) TYPE OF CONSTRUCTION	FIXED WITH S.S. FASTENERS REMOVABLE
02.	HEADER		04.	MOUNTING DETAIL	THROUGH BOTTOM FRAME
	(a) MATERIAL OF CONSTRUCTION	40NB M.S SEAMLESS SCH 80 ASTM A 106 TESTED AT 100 BAR PRESSURE FOR 10 MINUTES			
	(b) FINISH	POWDER COATING - RED TEXTURED			
	(c) TYPE OF CONSTRUCTION	FIXED WITH S.S. FASTENERS REMOVABLE			

IMPORTANT:

AGNI CONTROLS RESERVES THE RIGHT TO CHANGE OR MODIFY WITHOUT PREVIOUS NOTICE ANY DATA OR SPECIFICATION DUE TO CHANGES OR MODIFICATION IN ORDER TO IMPROVE THE PRODUCTS / SYSTEM PRESENTED.