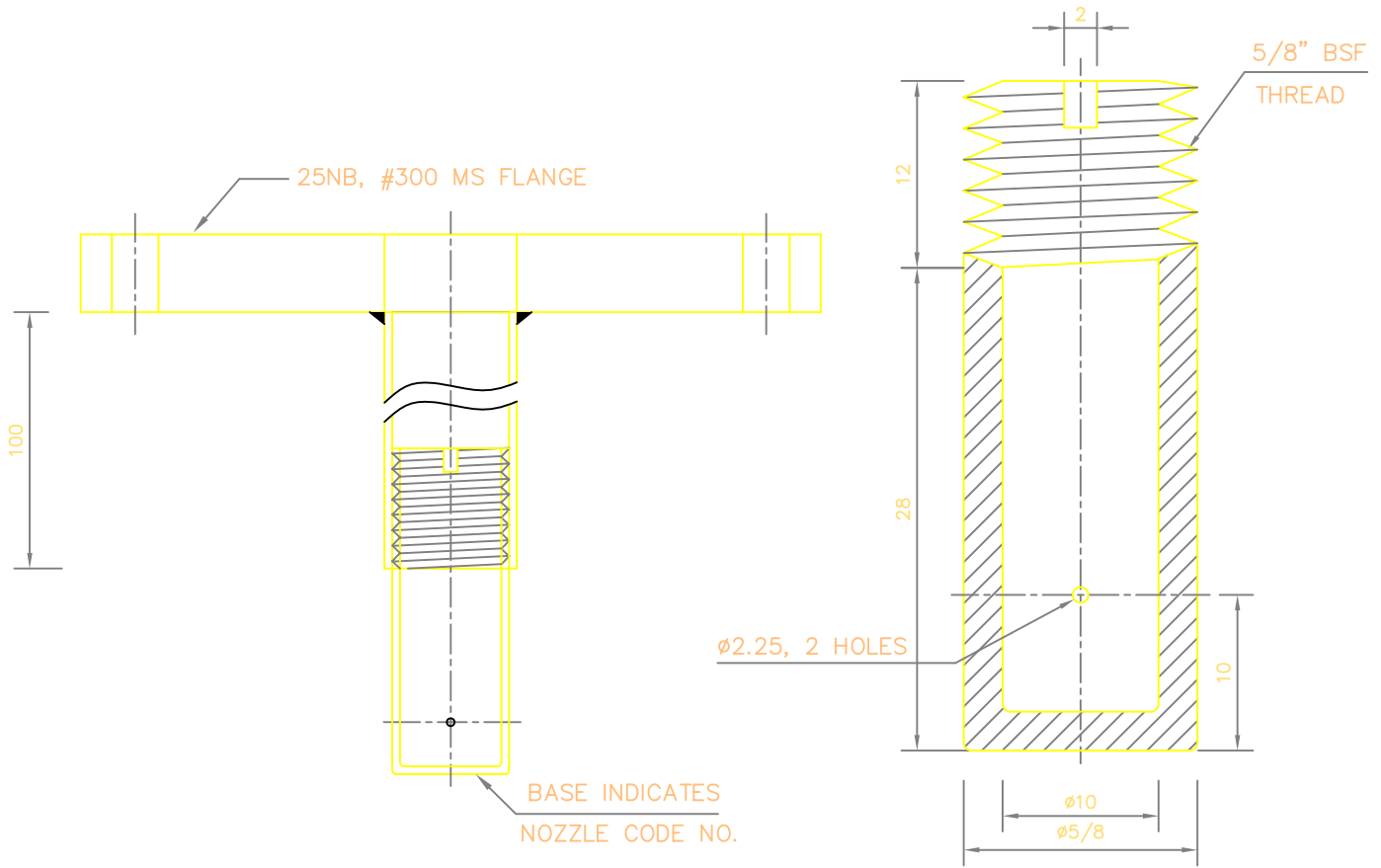


DATA SHEET	CO2 DISCHARGE NOZZLE FLANGE TYPE	PART NO : IH012-01
-------------------	---	--------------------

DWG NO : 350	DATE : APRIL2010	REVISION : 00	SCALE : N.T.S	SHEET : 1 OF 1	APPD. BY : D.B.
--------------	------------------	---------------	---------------	----------------	-----------------

INTRODUCTION :-

NOZZLE IS USED IN CO2 FLOODING SYSTEM, NOZZLE WITH OPEN ORIFICE WITH FLANGE WILL BE FIXED AT APPROPRIATE PLACE IN THE PROTECTED AREA. CO2 WILL BE DISCHARGE THROUGH THE NOZZLE.



FLANGE (SECTION VIEW)

NOZZLE

(SCALE 2:1)

ALL DIMENSIONS ARE IN "mm" UNLESS OTHERWISE SPECIFIED.

TECHNICAL SPECIFICATION

01.	FLANGE	MATERIAL OF CONSTRUCTION – 25 NB, #300 MS (GALVANIZING)
02.	NOZZLE	MATERIAL OF CONSTRUCTION – SS 316
03.	ORIFICE	DRILLED AS PER ORIFICE CODE NO. 4
04.	MAKE	bala-wa AGNI CONTROLS

IMPORTANT:

AGNI CONTROLS RESERVES THE RIGHT TO CHANGE OR MODIFY WITHOUT PREVIOUS NOTICE ANY DATA OR SPECIFICATION DUE TO CHANGES OR MODIFICATION IN ORDER TO IMPROVE THE PRODUCTS / SYSTEM PRESENTED.



**ISO 9001 - 2008
CERTIFIED BY
BUREAU VERITAS**
 NO.1, 6TH STREET, Dr.SUBBARAYAN NAGAR,
 KODAMBAKKAM, CHENNAI-600 024, INDIA.
 PHONE : +91 44 2481 2420, FAX : +91 44 2481 2475,
 E-MAIL : engineering@agnicontrols.com WEBSITE : www.balafire.com