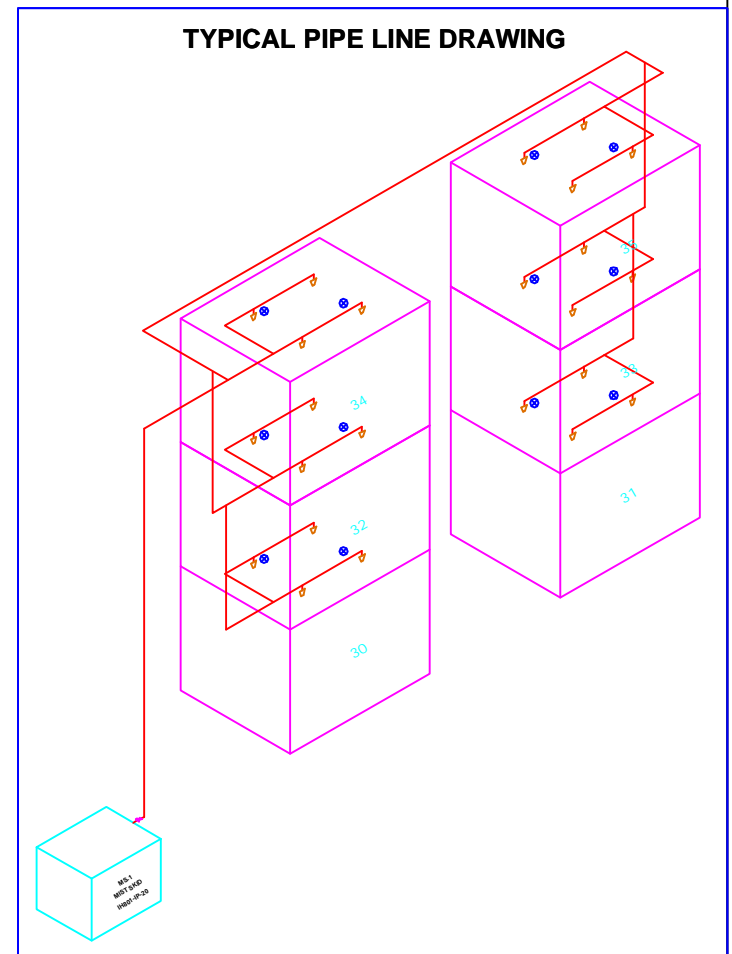
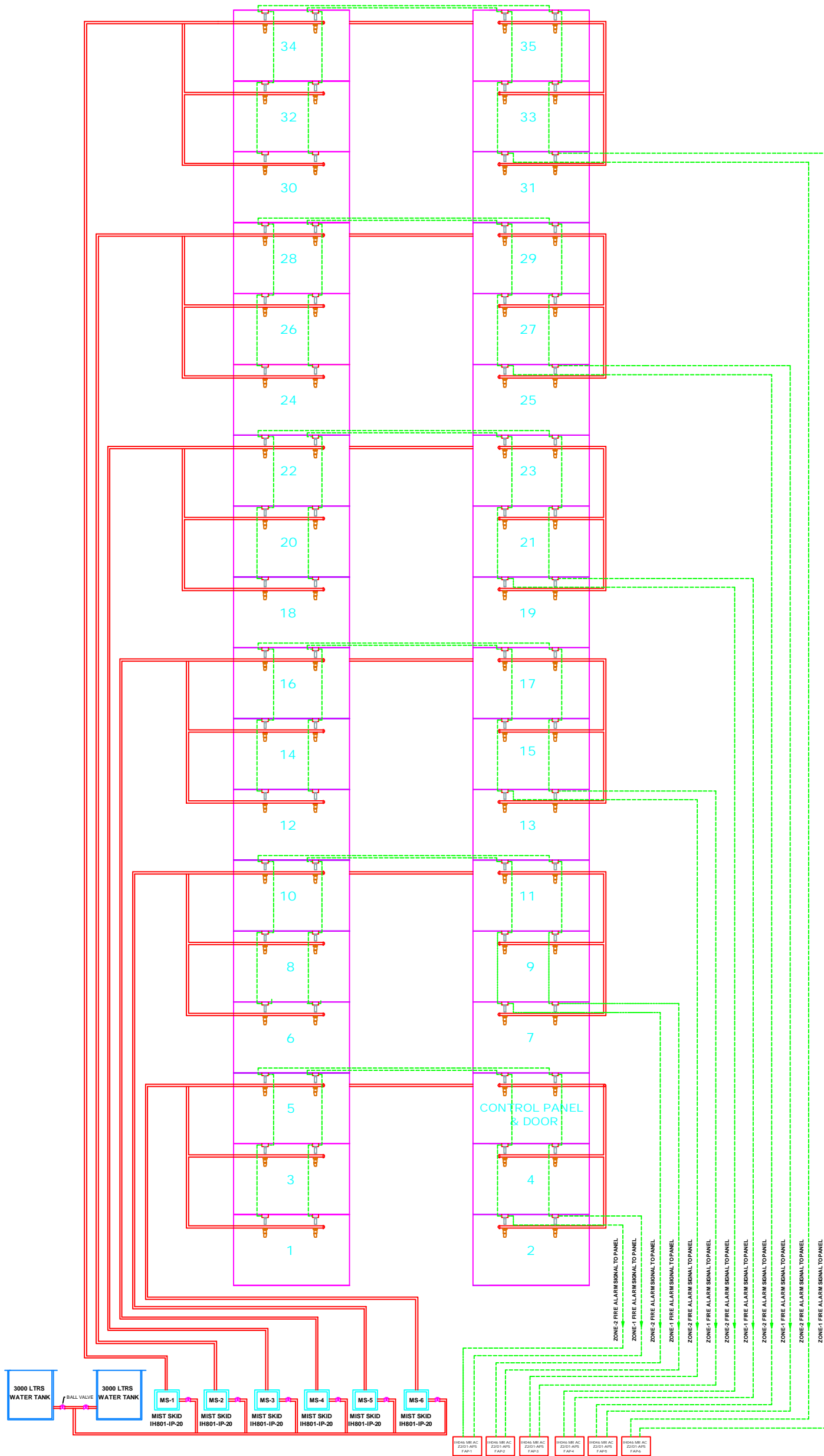


TYPICAL SCHEME OF INTERMEDIATE PRESSURE WATER MIST SYSTEM FOR TOWER CAR PARKING



DETAILS

Sl. NO.	SYMBOL	PART NO.	DESCRIPTION	QTY.
01.	MS	IH801 IP-20 MS	WATER MIST PUMP SKID POSITIVE DISPLACEMENT 3 STROKE PISTON PUMP DISCHARGE 120 LPM AT WORKING PRESSURE OF 20-25 BAR. 3 PHASE ELECTRICAL SUPPLY 5.5KW STARTING CONTROL UNIT	6 SET.
02.		IH801 -11-IP	MIST NOZZLE	144 NOS.
03.		IH801/SS316	SS316- SCH.40 PIPE	NQ.
04.		IH901-WT-3000	2x3000 LITRE TANK WITH 50NB CONTROL VALVE TANK INNER COATED FOR ANTI CORROSIVE AND ANTI FUNGUS.	1 NO.
05.		IH042-60	PROBE TYPE HEAT DETECTOR 60 DEG.C	72 NOS.
06.		IH046 MR AC Z2/D1-APS	CONVENTIONAL MICROPROCESSOR BASED 2 ZONE FIRE ALARM PANEL WITH SINGLE GAS DISCHARGE MODULE.	6 NOS.
07.		ES 04 049	2CX1.5 SQ.MM CU.ARMD. FRLS CABLE.	NQ.

TENDER PURPOSE ONLY

CLIENT	M/S. CHENTECH ENTERPRISES.,					
TITLE	SCHEME DRAWING FOR INTERMEDIATE PRESSURE WATER MIST SYSTEM FOR TOWER CAR PARKING					
DRAWING NO:	REV	DESIGNED BY	TENDER TEAM	14-03-13	SCALE	SHEET NO.
DP-5.43/13-673	00	APPROVED BY		14-03-13	N.T.S	1 OF 1